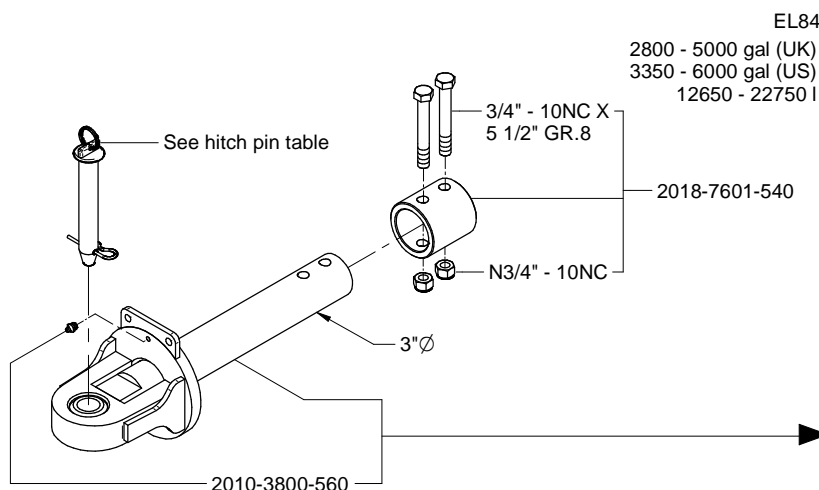


Table of contents.....	01
Hardware identification table.....	02
Single & double hitch.....	03
Ball hitch.....	04
Draw bar.....	05
Axle and frame.....	06
Brake, axle and hub - since September 2014.....	07
Brake, axle and hub - from June 1995 to September 2014.....	08
Brake, axle and hub - from 1993 to June 1995.....	09
Disc brake hub.....	10
Disc brake system - master cylinder.....	11
Disc brake system.....	12
Rim, wheel and wheel nut wrench.....	13
Impeller, housing, intake and front drain standard.....	14
Bearing housing, impeller and housing cover plate standard.....	15
Impeller, housing, intake and front drain HE.....	16
Bearing housing, impeller and housing cover plate HE.....	17
Bearing housing, plug and cover plate (old models).....	18
Self-loading system.....	19-20
Nursing kit system 6".....	21
6" Discharge pipe.....	22-23
In-tank recirculation kit for 6" discharge pipe.....	24
Rotative valve for actuator and cross-shaped adapter with flow restrictor for 6" discharge pipe.....	25
Spreading nozzle and directional valve for 6" discharge pipe.....	26
Spreading nozzle pipe chart for 6" discharge pipe.....	27
8" Discharge pipe.....	28-29
In-tank recirculation kit for 8" discharge pipe.....	30
Rotative valve for actuator for 8" discharge pipe.....	31
Spreading nozzle and directional valve for 8" discharge pipe.....	32
Spreading nozzle pipe chart for 8" discharge pipe.....	33
Rear drain and fill indicator.....	34
Fill opening.....	35
Signal lights.....	36
Electronique fill indicator.....	37
Tank repair plate and support guard.....	38
Ladder.....	39
Hydraulic jack on the transport support.....	40

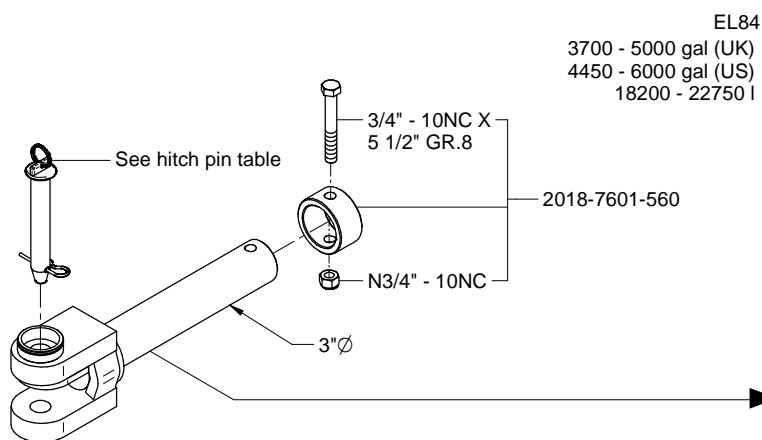
Hardware Identification	
Type	Designation
Hexagonal bolt	-
Carriage bolt	CB
Square head bolt	SB
Socket head cap screw	SCS
Socket head set screw	SSS
Flat head cap screw	FCS
Hexagon nut	-
Hexagon nylon lock nut	N
Hexagon oval lock nut	OVL
Hexagon tri-lock nut	TRI
Castle nut	CSL
Flange nut	FLN
Wing nut	WNG
Flat washer	-
Lock washer	L
SAE washer	SAE
Large ext. dia. washer	LD
Small ext. dia. washer	SD
Stainless steel bolts parts	SS


EL84

 2800 - 5000 gal (UK)
 3350 - 6000 gal (US)
 12650 - 22750 l

Single hitch (according to hole diameter)

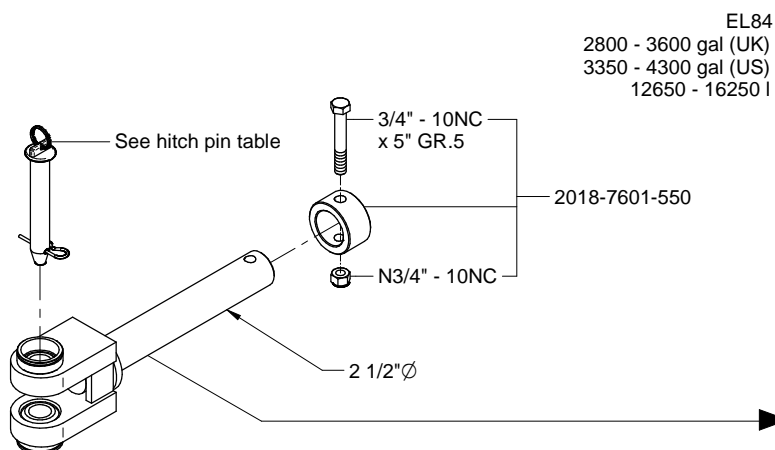
Top view	Part no
1 1/4"	2018-7704-390
1 5/16"	2018-7704-400
1 3/8"	2018-7704-410
1 1/2"	2018-7704-420
1 5/8"	2018-7704-430
1 3/4"	2018-7704-440
1 7/8"	2018-7704-450
2"	2018-7704-460
2 1/8"	2018-7704-470
2 1/4"	2018-7704-480


EL84

 3700 - 5000 gal (UK)
 4450 - 6000 gal (US)
 18200 - 22750 l

Double hitch (according to hole diameter)

Top view	Part no
1 1/4"	2018-7704-110
1 5/16"	2018-7704-120
1 3/8"	2018-7704-200
1 1/2"	2018-7704-130
1 5/8"	2018-7704-140
1 3/4"	2018-7704-150
1 7/8"	2018-7704-160
2"	2018-7704-170
2 1/8"	2018-7704-180
2 1/4"	2018-7704-190


EL84

 2800 - 3600 gal (UK)
 3350 - 4300 gal (US)
 12650 - 16250 l

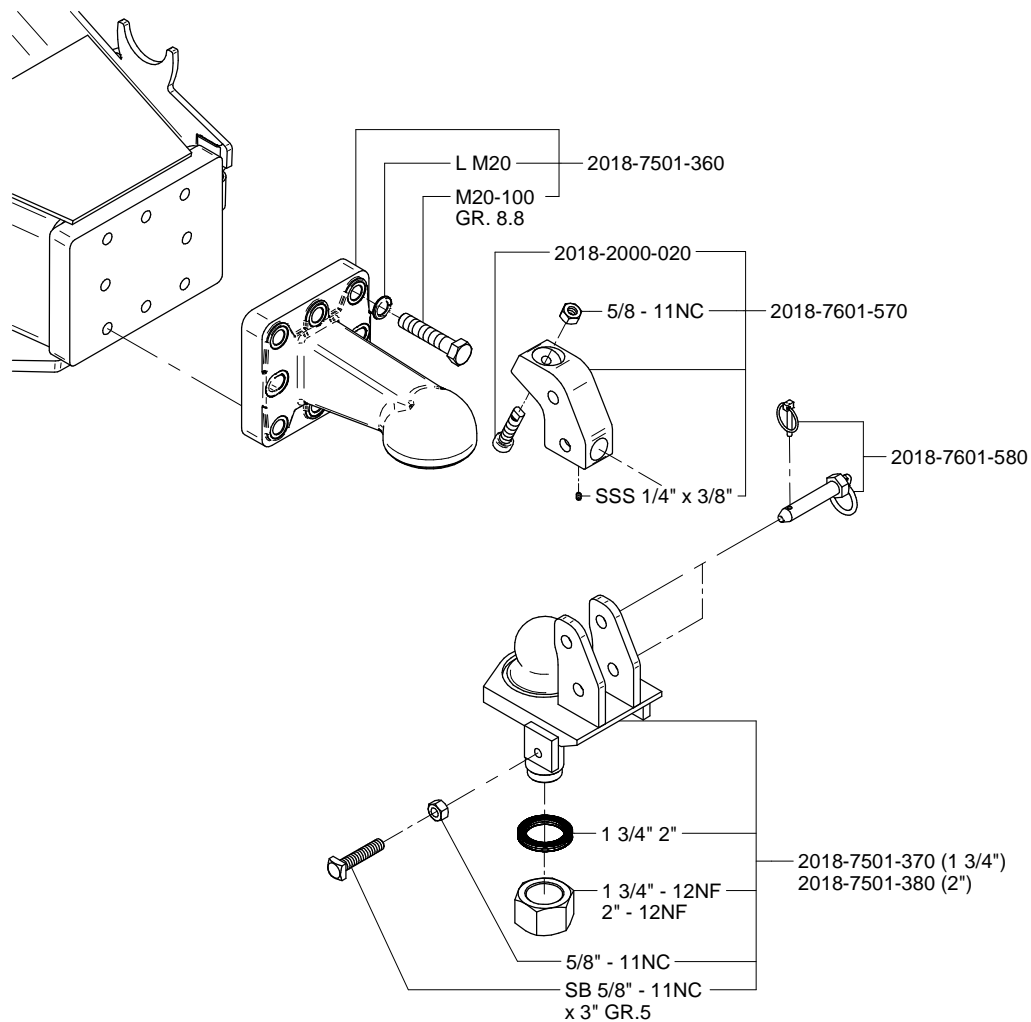
Double hitch (according to hole diameter)

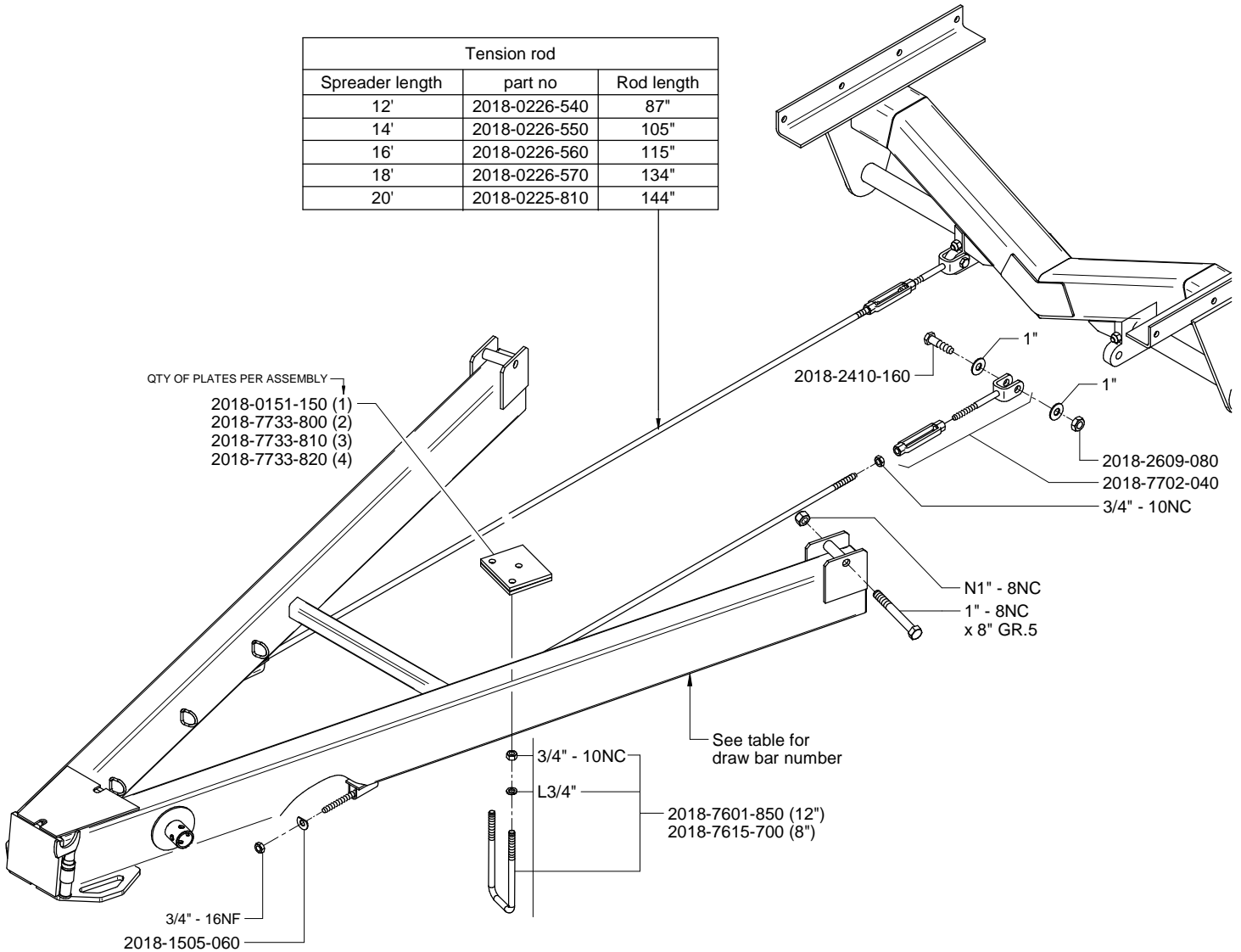
Top view	Part no
1 1/8"	2018-7704-090
1 1/4"	2018-7704-000
1 5/16"	2018-7704-010
1 3/8"	2018-7704-100
1 1/2"	2018-7704-020
1 5/8"	2018-7704-030
1 3/4"	2018-7704-040
1 7/8"	2018-7704-050
2"	2018-7704-060
2 1/8"	2018-7704-070
2 1/4"	2018-7704-080

Pin identification

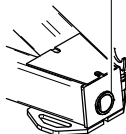
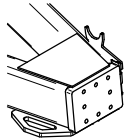
Pin diameter	Hole diameter	Part no
Ø 1"	Ø 1 1/8"	2018-3802-420
Ø 1 1/4"	Ø 1 3/8"	2018-3802-430
Ø 1 3/8"	Ø 1 1/2"	2018-3802-440
Ø 1 1/2"	Ø 1 5/8"	2018-3802-460

For other hole diameter, the pin must be provided by the costomer



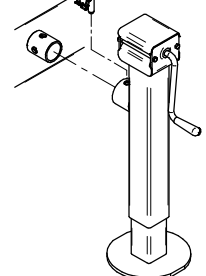


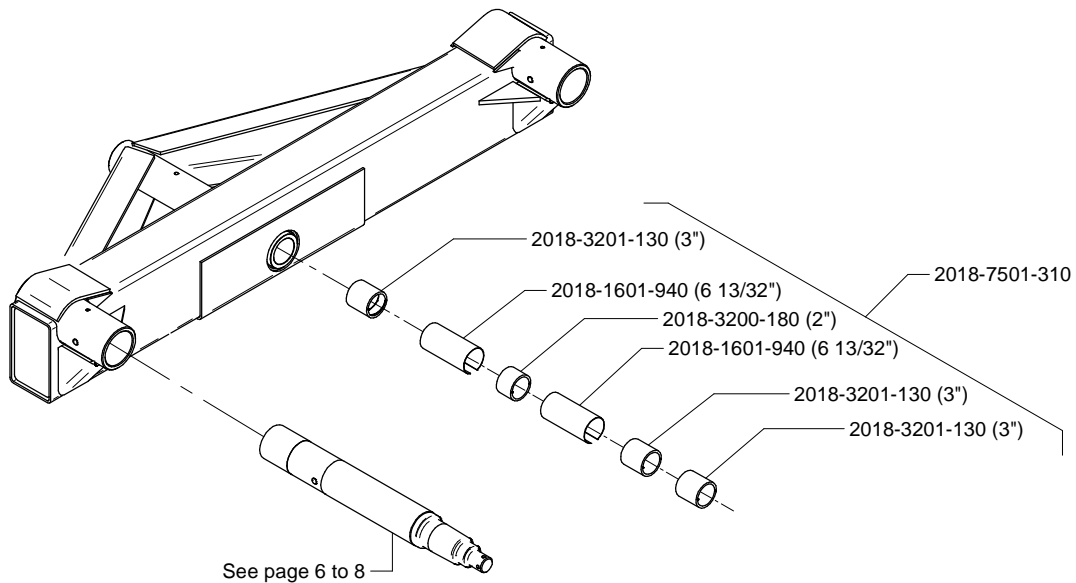
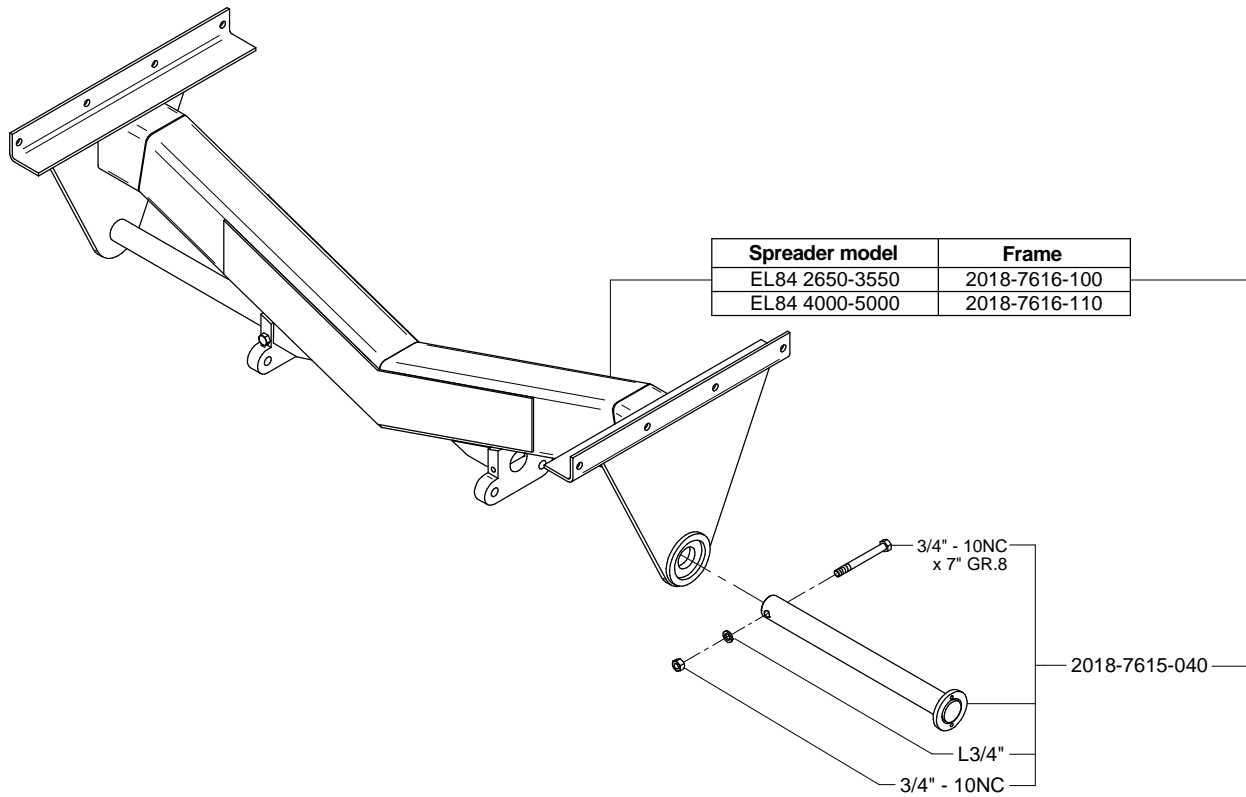
NOTE: All draw bars listed below are standard without options. For draw bar replacement requiring an option, order a standard draw bar and add the desired option(s):
 2018-8048-520; Additional 500 lbs on draw bar.
 2018-8000-500; Trusses under draw bar (500 lbs not included)

2018-1700-830 (2 1/2") 2018-1702-350 (3")	 <p>EL84 Single & double hitch draw bar</p>	 <p>EL84 Ball hitch draw bar 2018-7601-510</p>
2650 - 3550 gal (UK) 3150 - 4250 gal (US) 11970 - 16160 l		
4000 - 5000 gal (UK) 4800 - 6000 gal (US) 18200 - 22750 l	2018-7627-600 2018-7627-610	

2018-7626-790
8000 Lbs

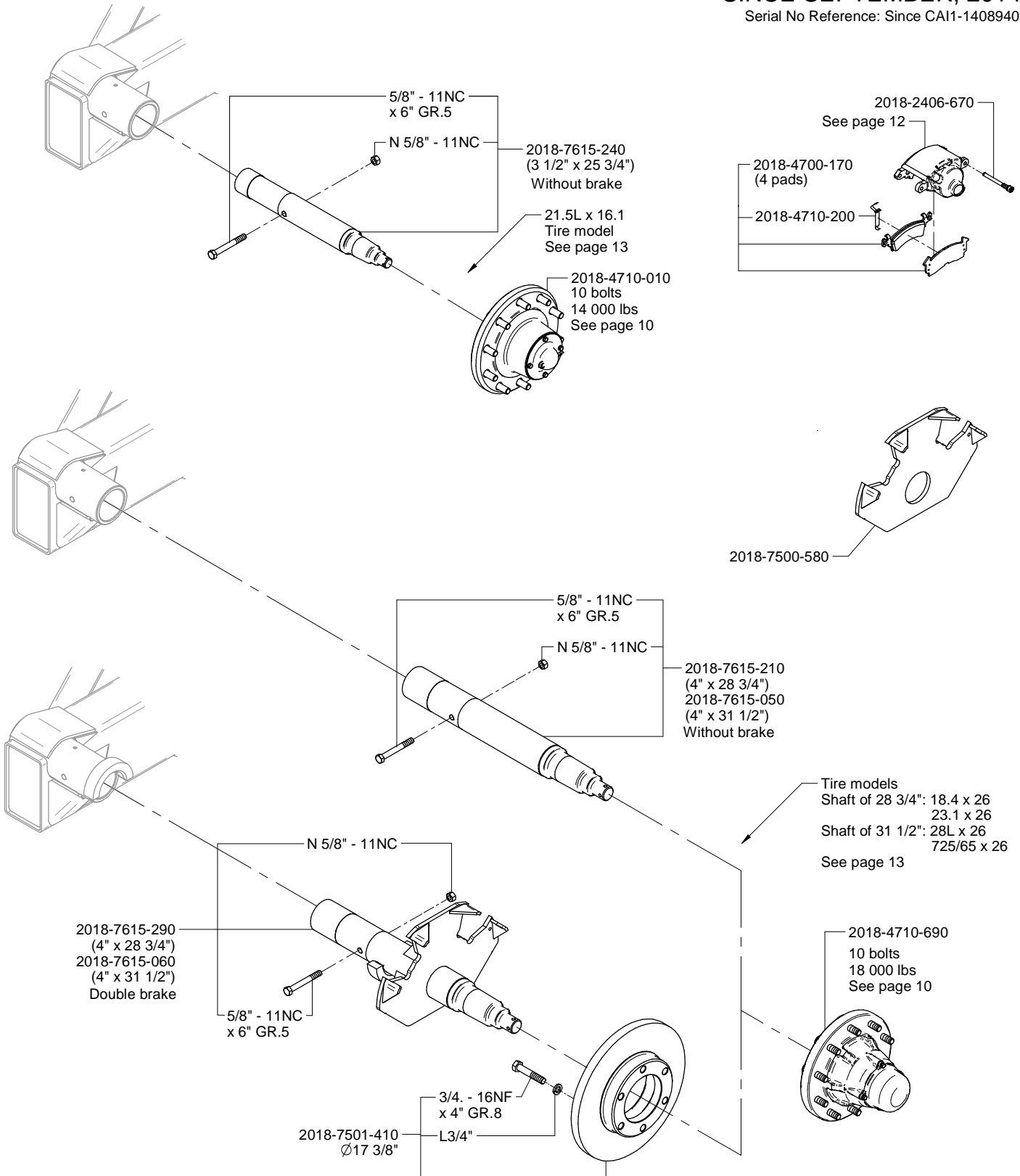
2010-4708-400





BRAKE, AXLE AND HUB SINCE SEPTEMBER, 2014

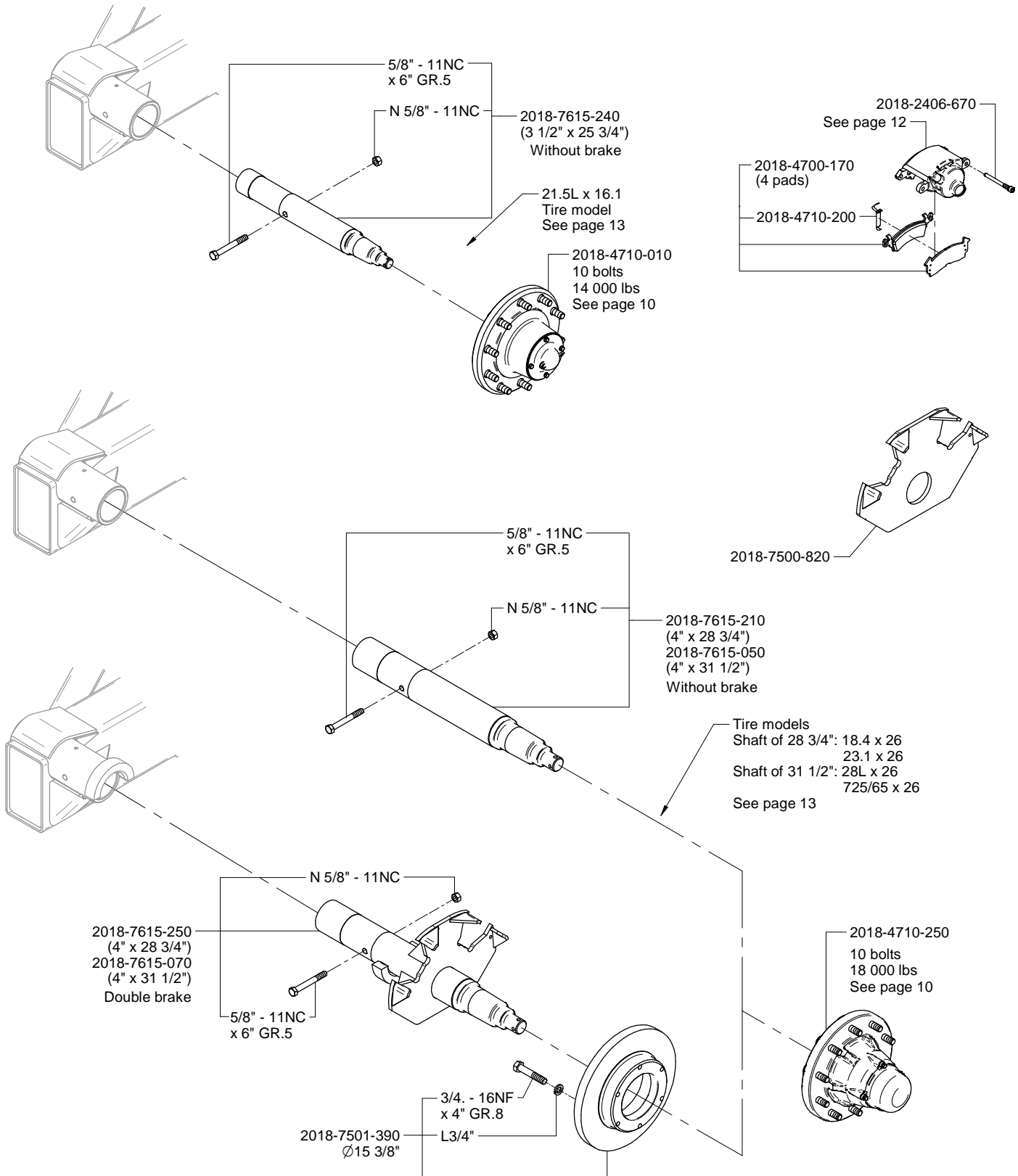
Serial No Reference: Since CA11-1408940



Note: The single caliper model is discontinued.
Use the double caliper model.

BRAKE, AXLE AND HUB FROM JUNE 1995 TO SEPTEMBER, 2014

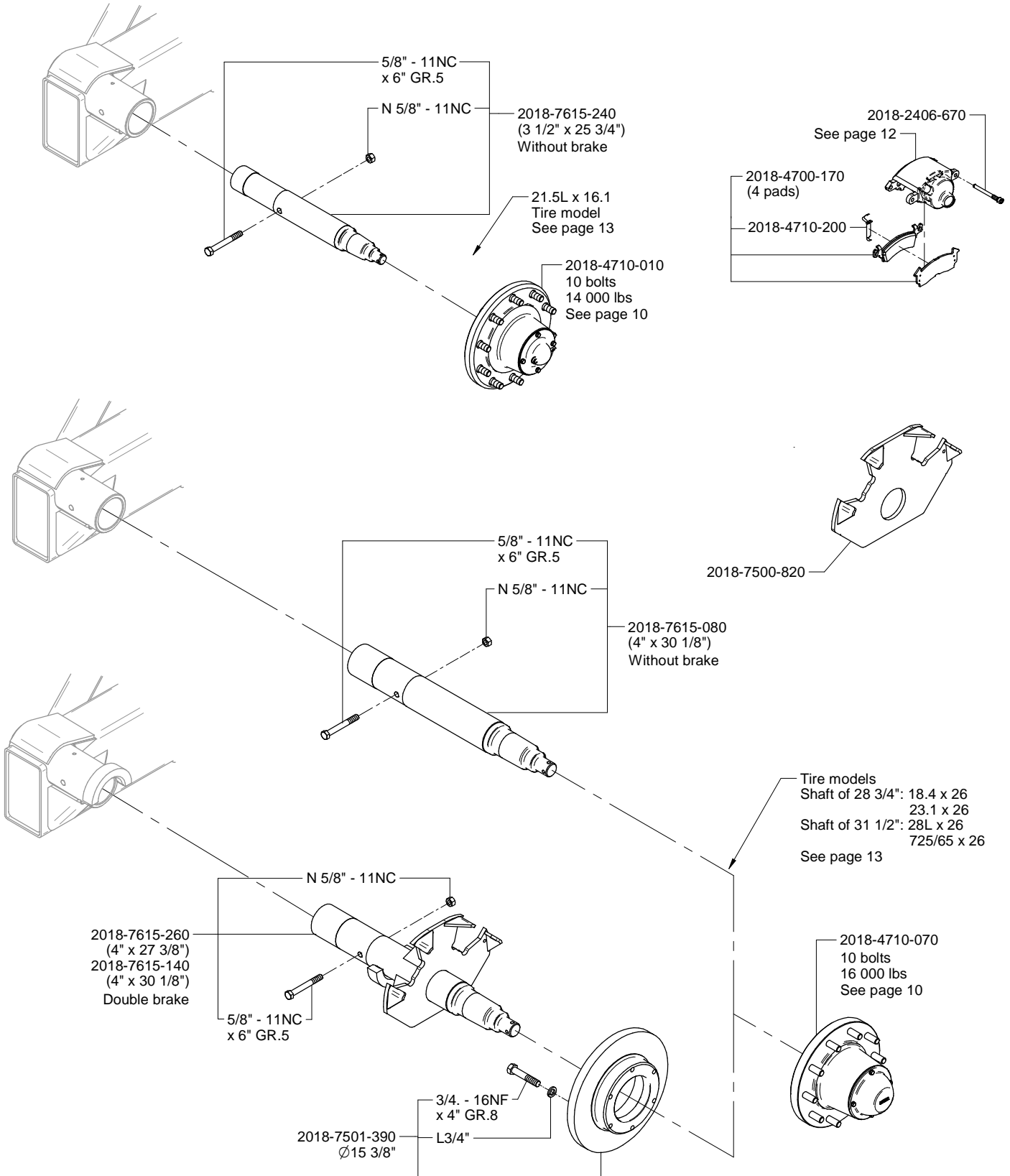
Serial No Reference: 95-783 @ CA11-1408940

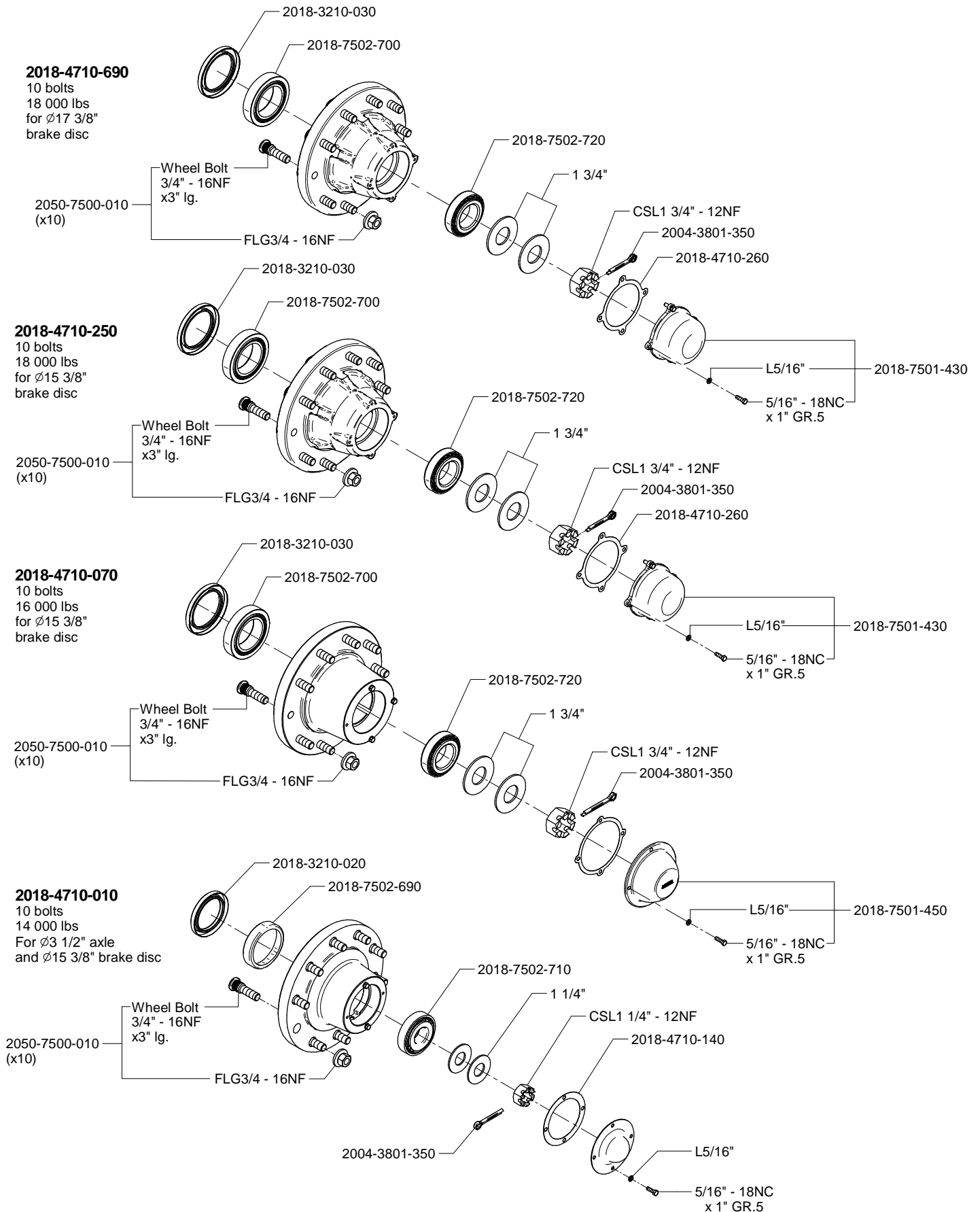


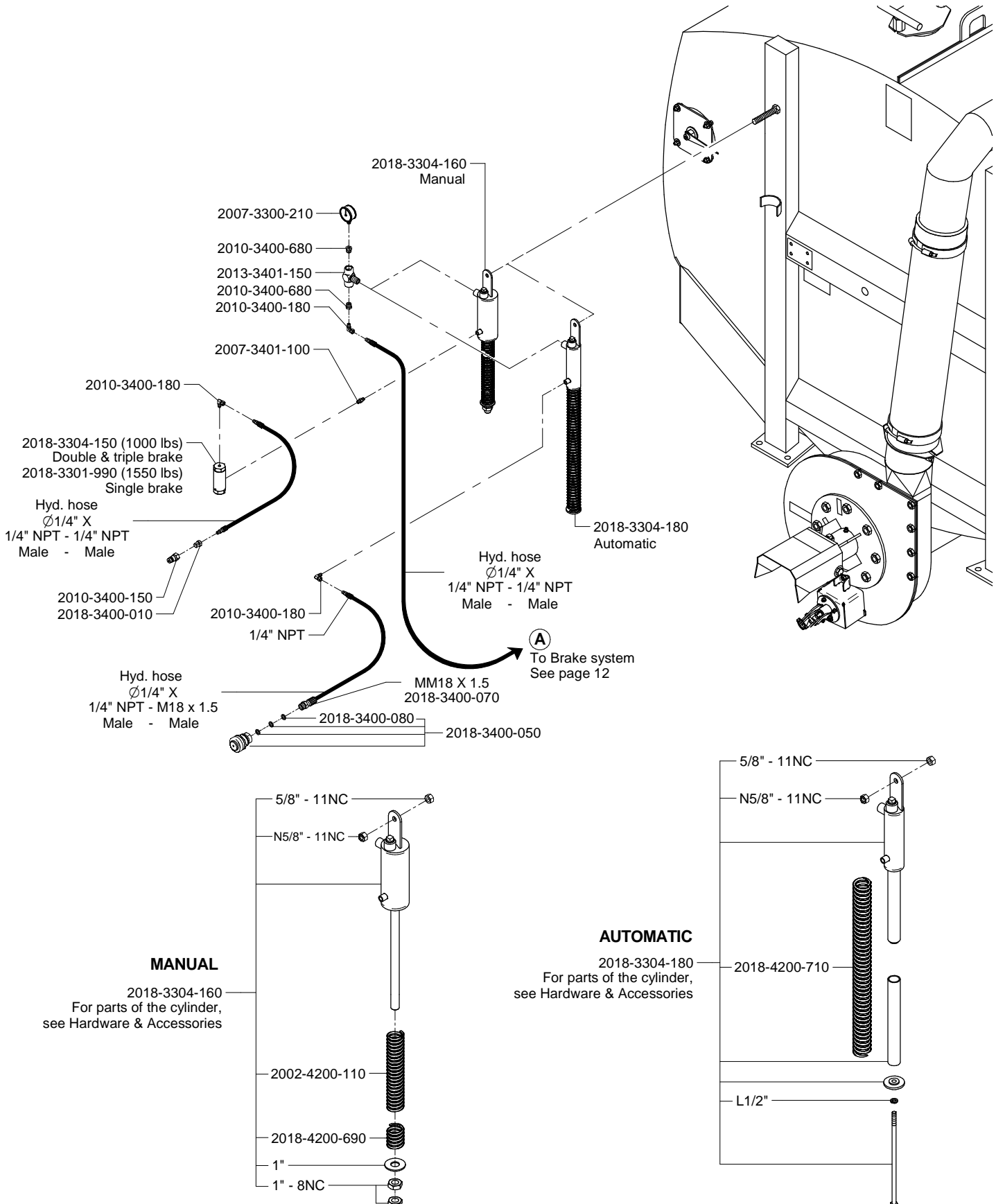
Note: The single caliper model is discontinued.
Use the double caliper model.

BRAKE, AXLE AND HUB FROM 1993 TO JUNE 1995

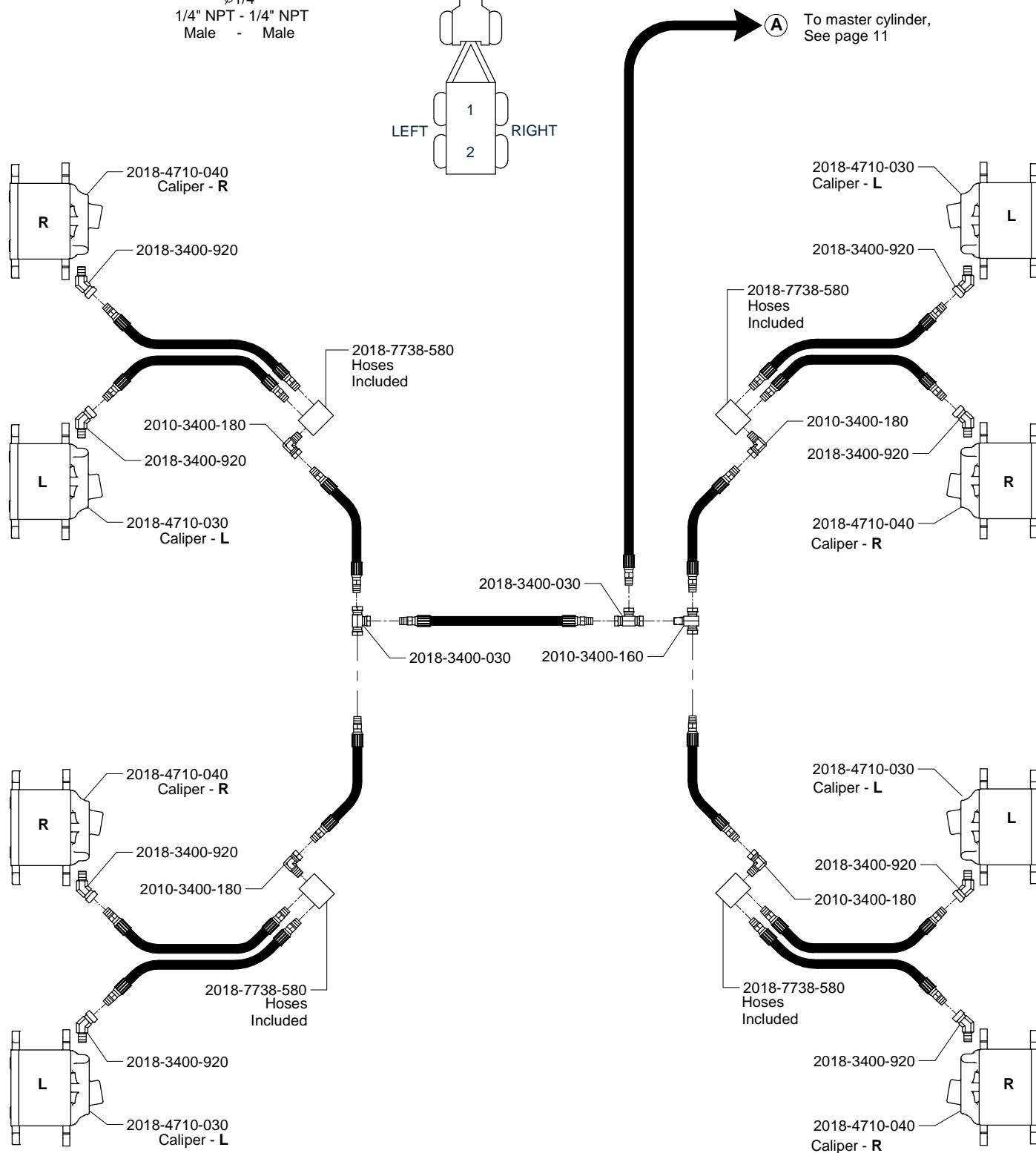
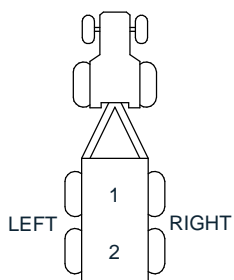
Serial No Reference: Before 95-783

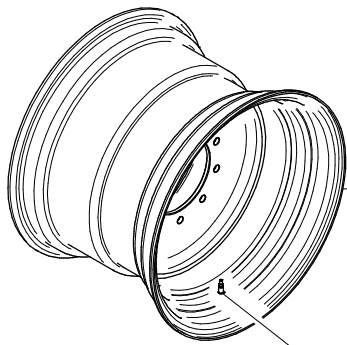






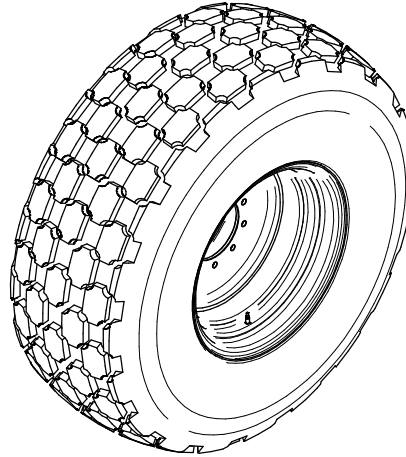
Hydraulic hose:
 $\varnothing 1/4"$
 1/4" NPT - 1/4" NPT
 Male - Male



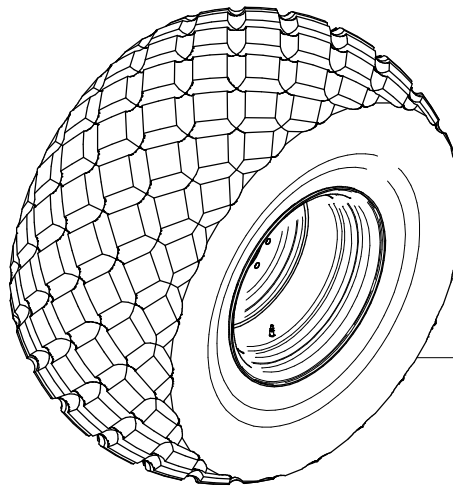
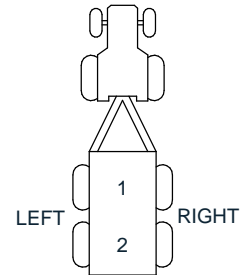


2018-7502-460
Rim 20 x 26
10 bolts

2018-3910-060

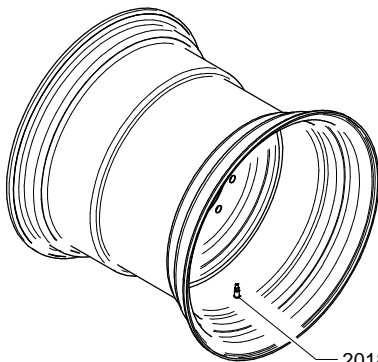


2018-7504-230
Complete wheel (rim included)
Goodyear 23.1 x 26
12 ply



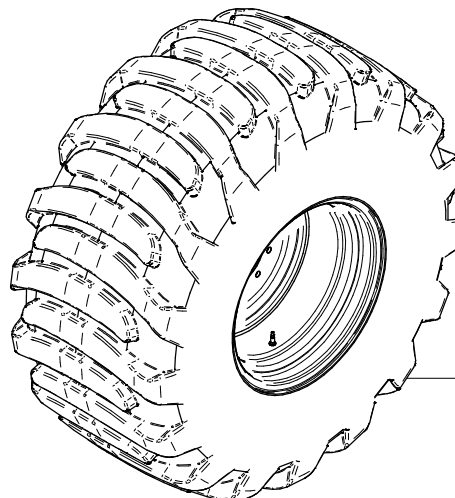
2018-7502-510
Complete wheel (rim included)
Alliance 28L x 26
16 ply

2018-3910-160
(tire only)



2018-7502-470
Rim 25 x 26
10 bolts

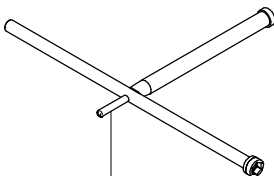
2018-3910-060



Complete wheel (rim included)
Galaxy 725 / 65 x 26
20 ply

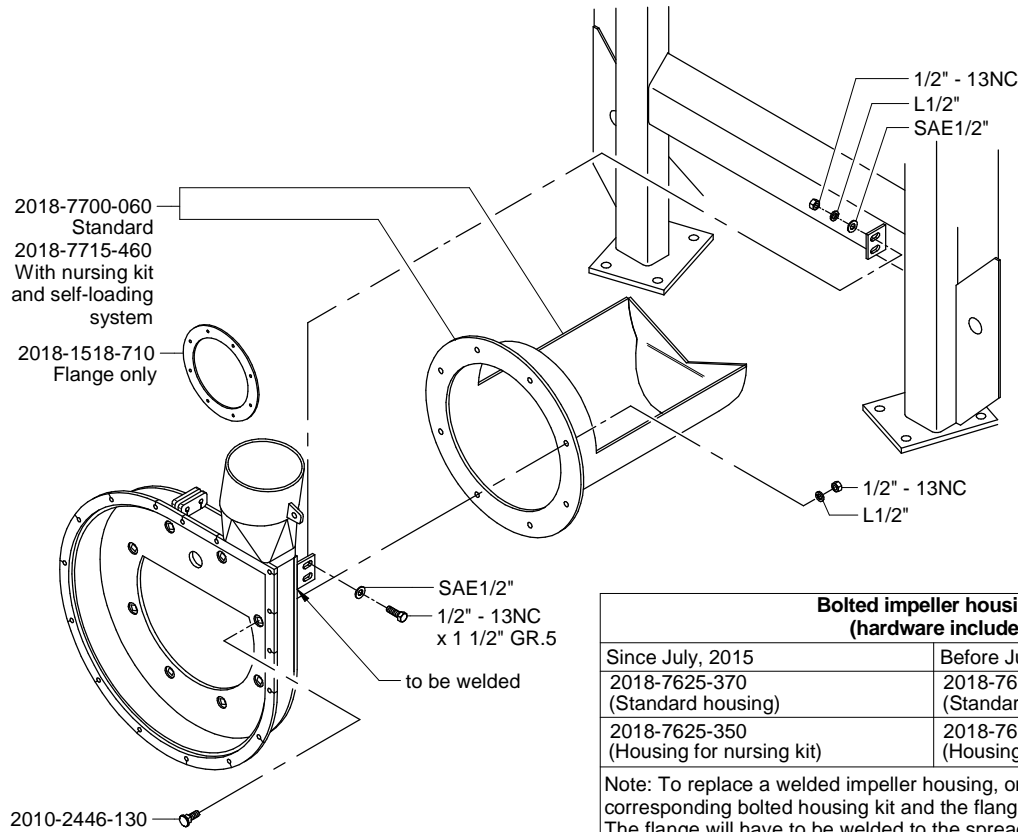
2018-7506-050
Complete wheel right side
2018-7506-040
Complete wheel left side

2018-3910-230
(tire only)

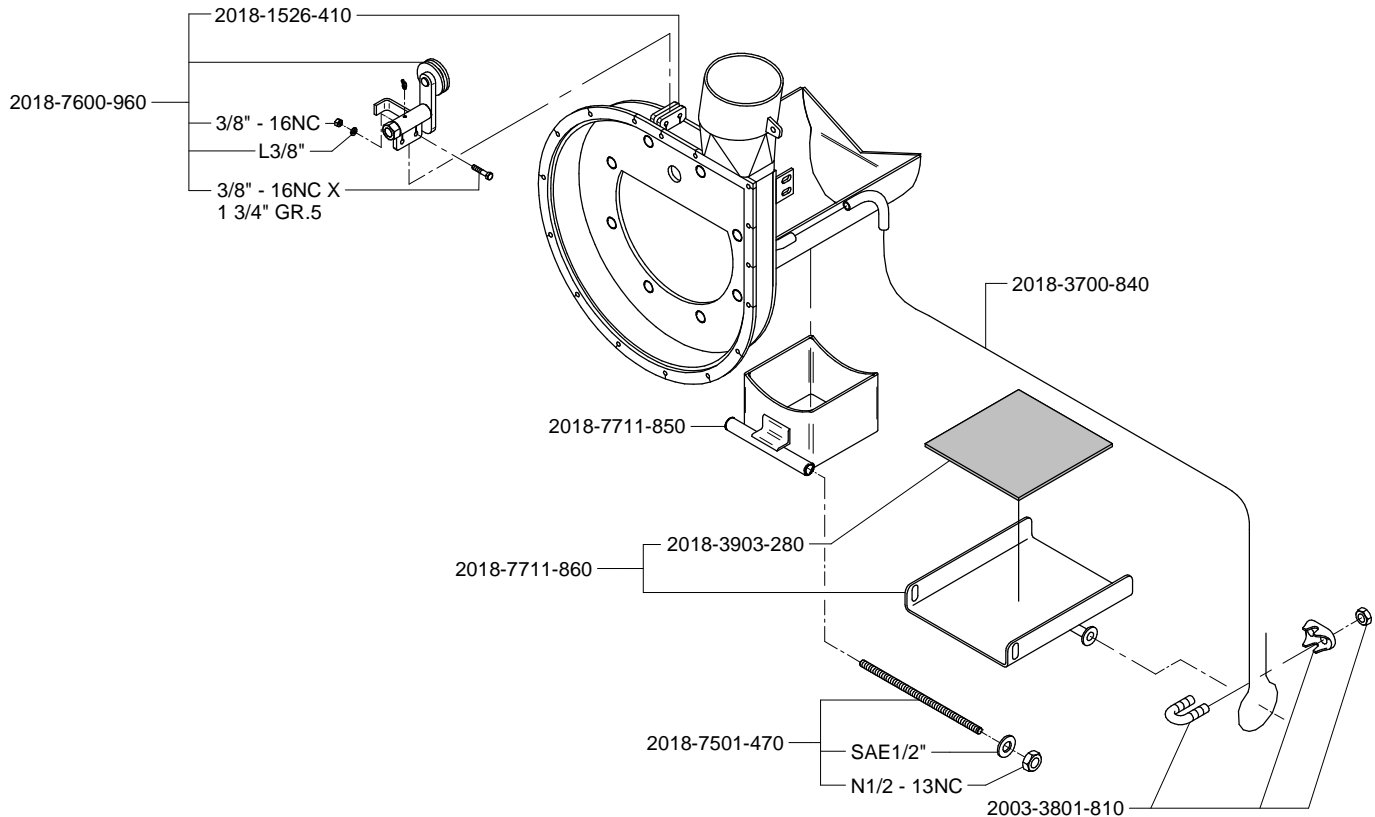


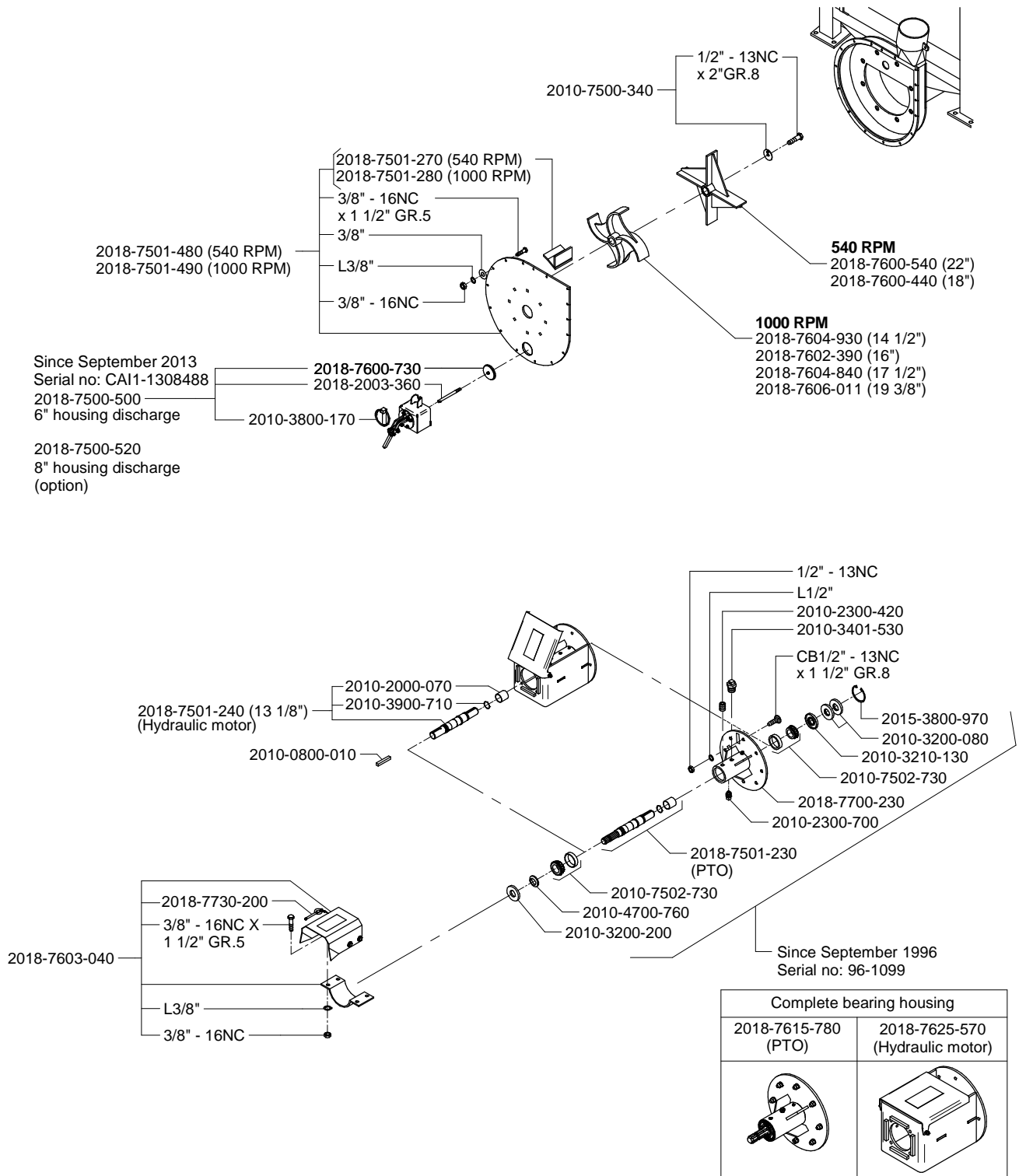
2018-7602-120

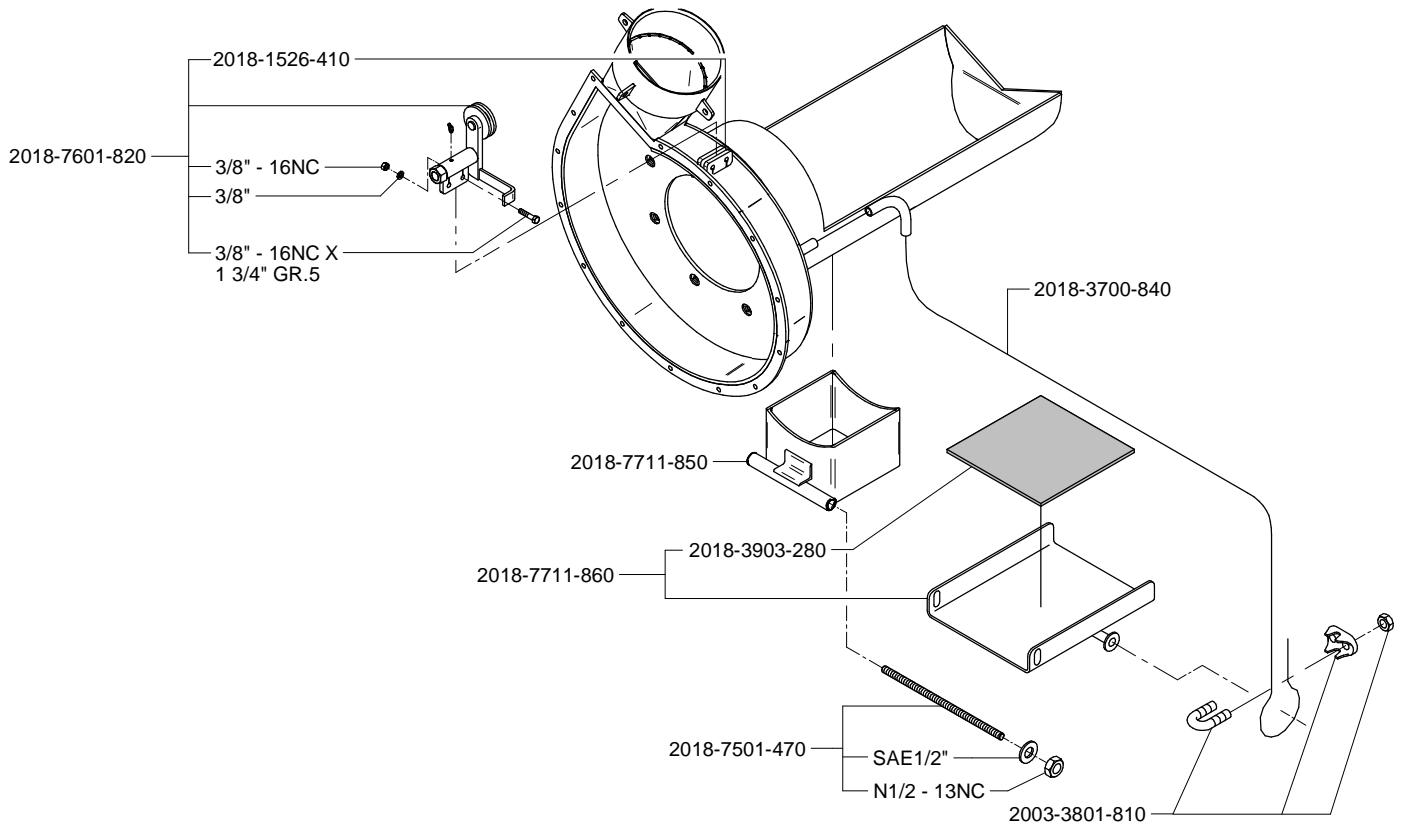
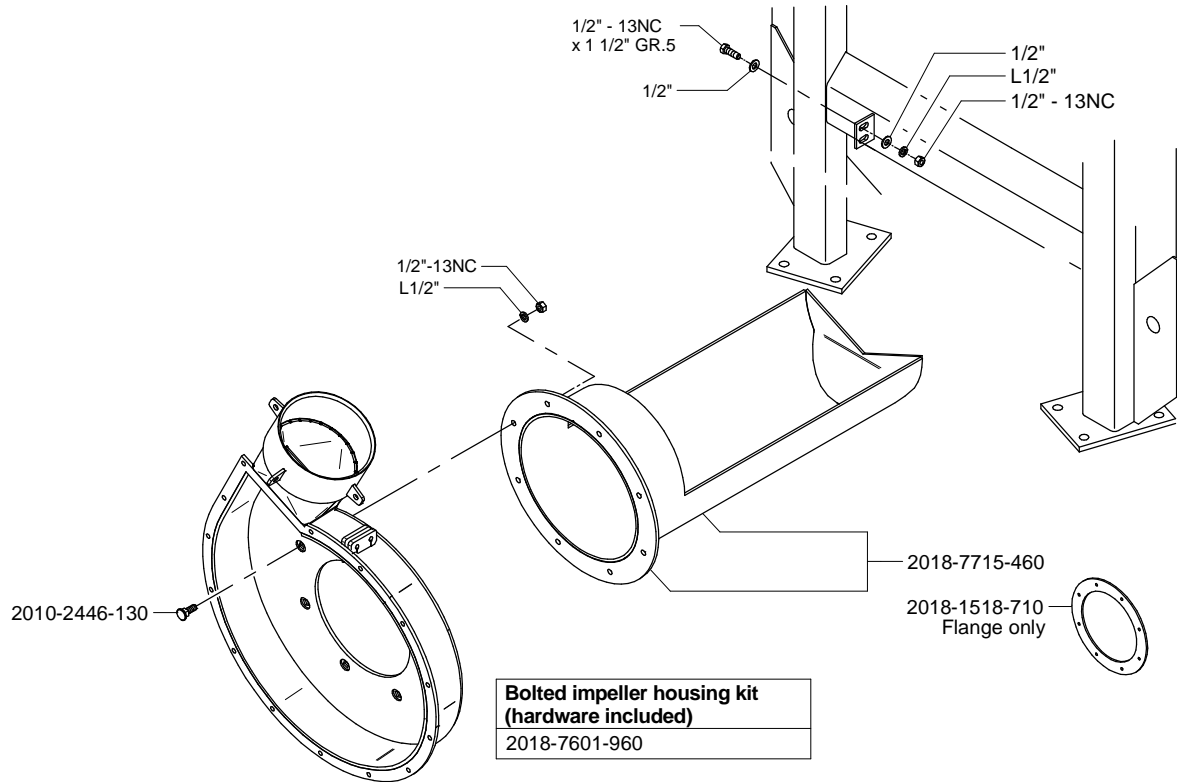
IMPELLER HOUSING, INTAKE AND FRONT DRAIN STANDARD

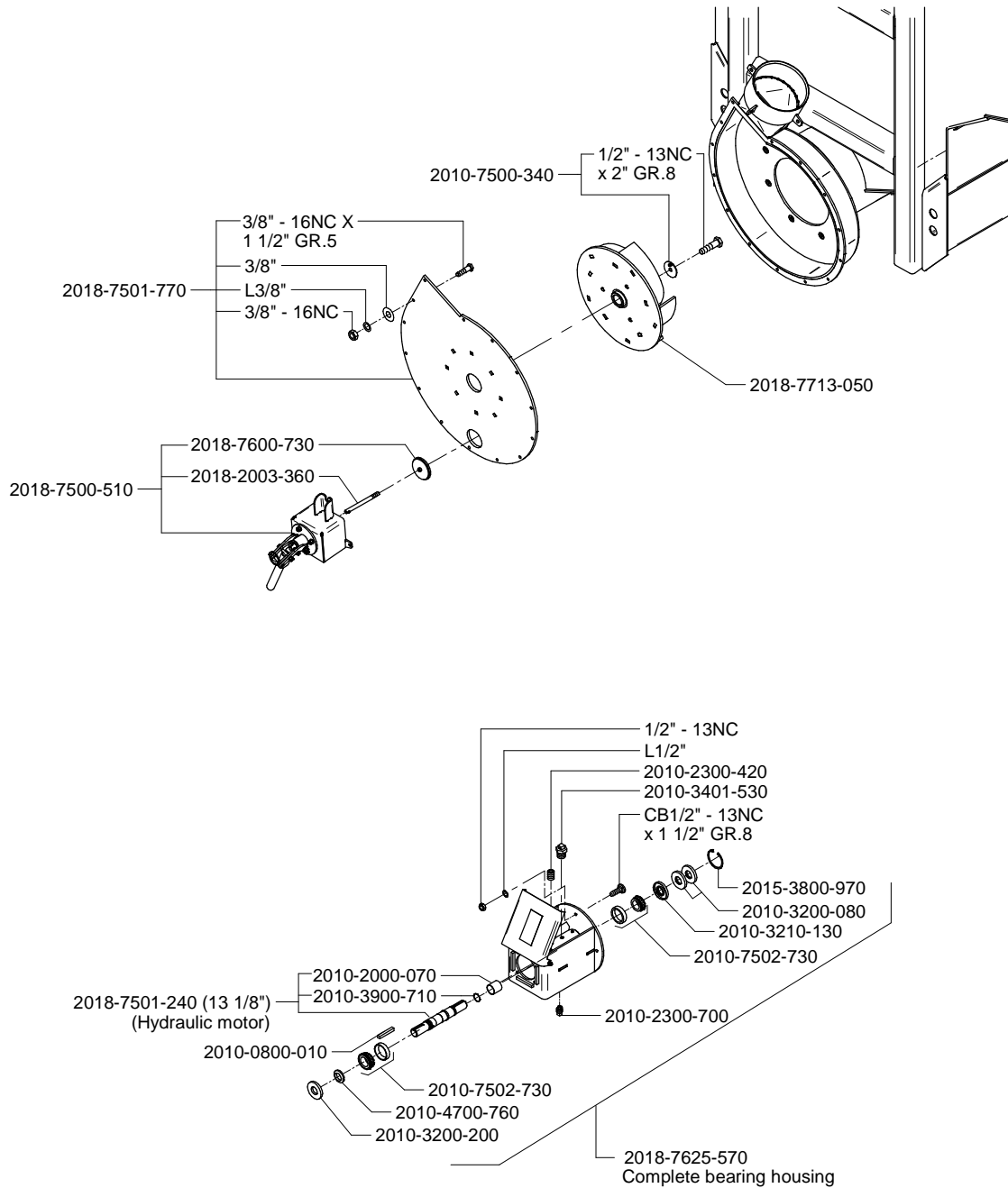


Bolted impeller housing kit (hardware included)	
Since July, 2015	Before July, 2015
2018-7625-370 (Standard housing)	2018-7625-360 (Standard housing)
2018-7625-350 (Housing for nursing kit)	2018-7625-340 (Housing for nursing kit)
Note: To replace a welded impeller housing, order the corresponding bolted housing kit and the flange 2018-1518-710. The flange will have to be welded to the spreader.	

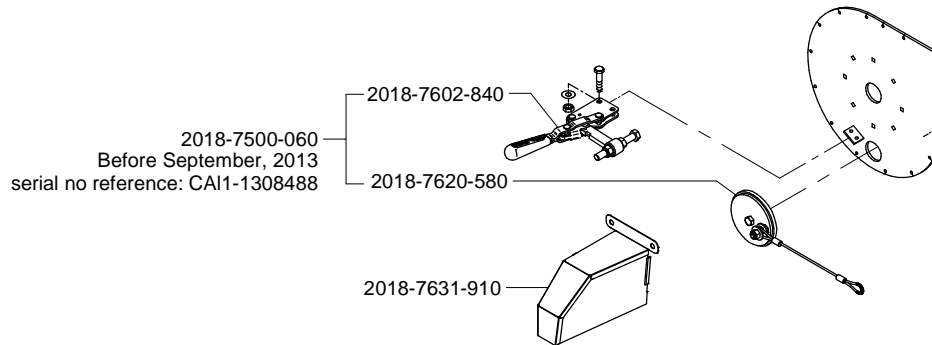




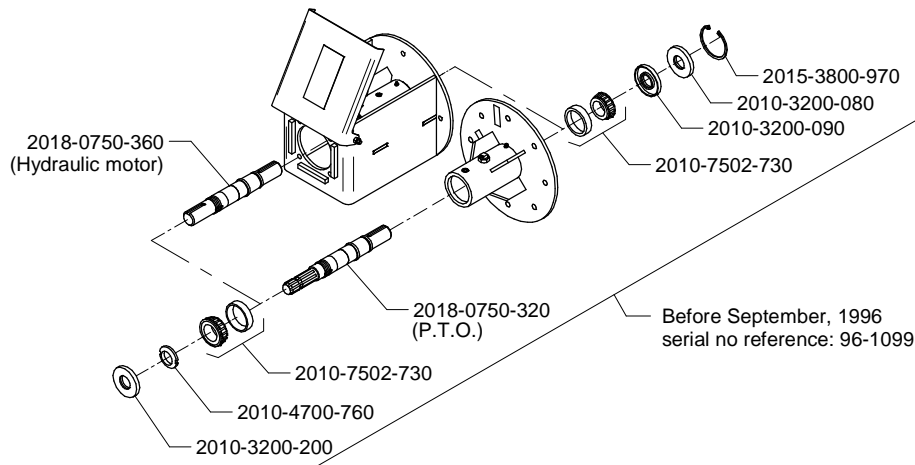
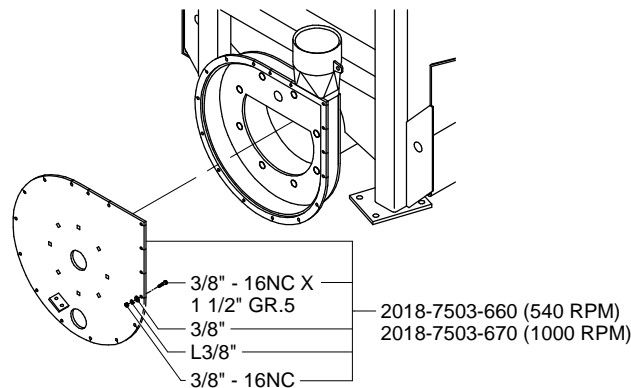


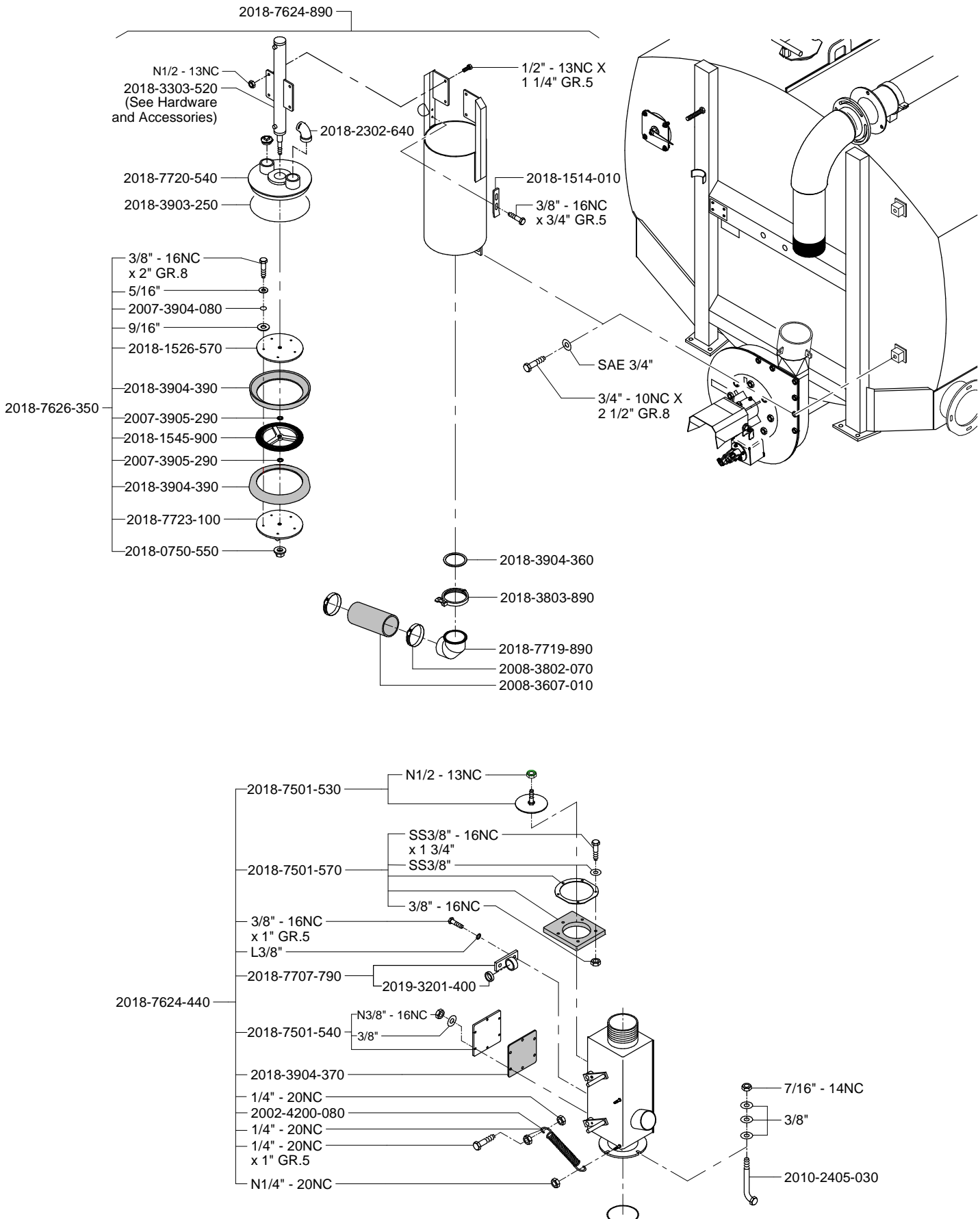


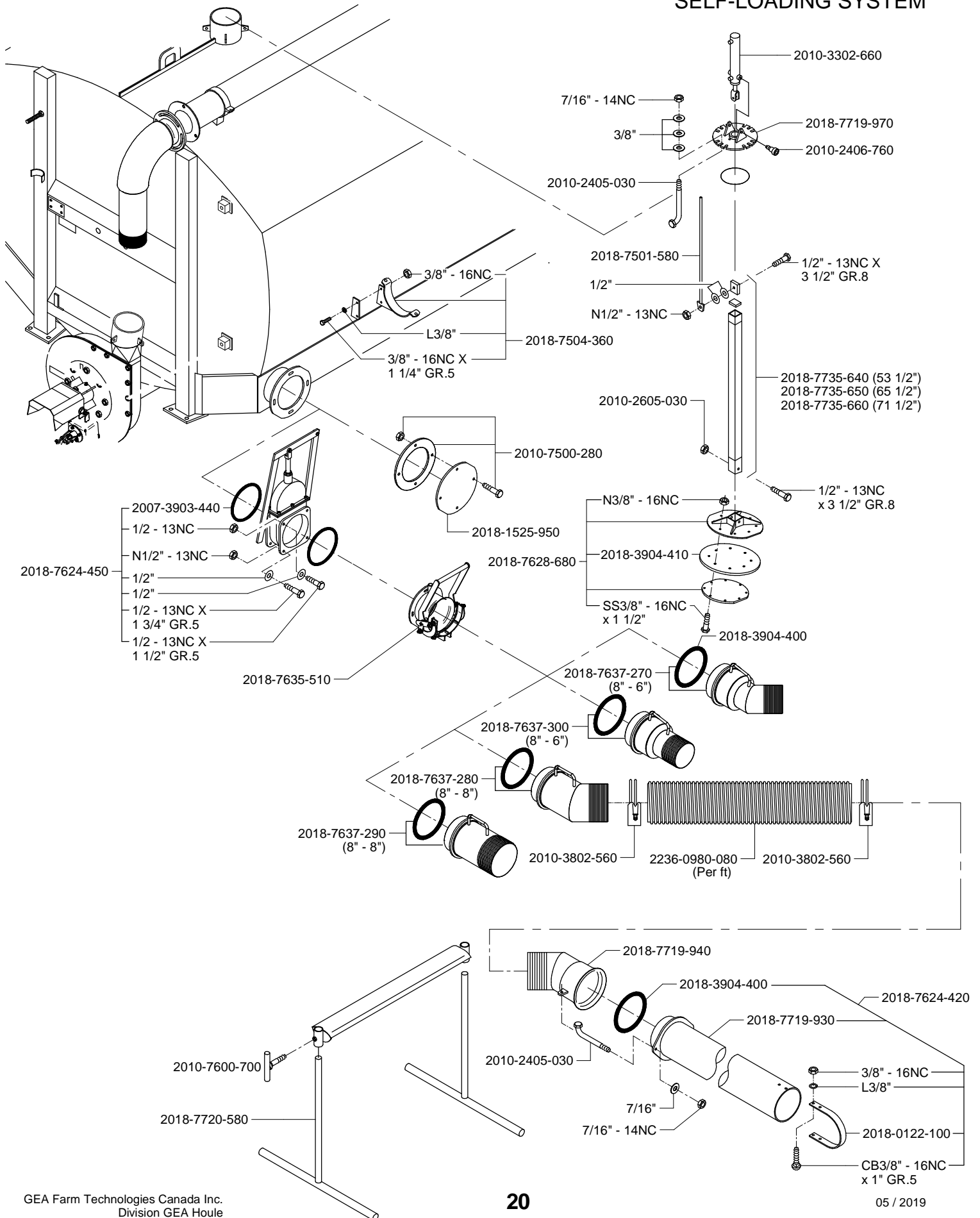
BEARING HOUSING, PLUG AND COVER PLATE OLD MODEL



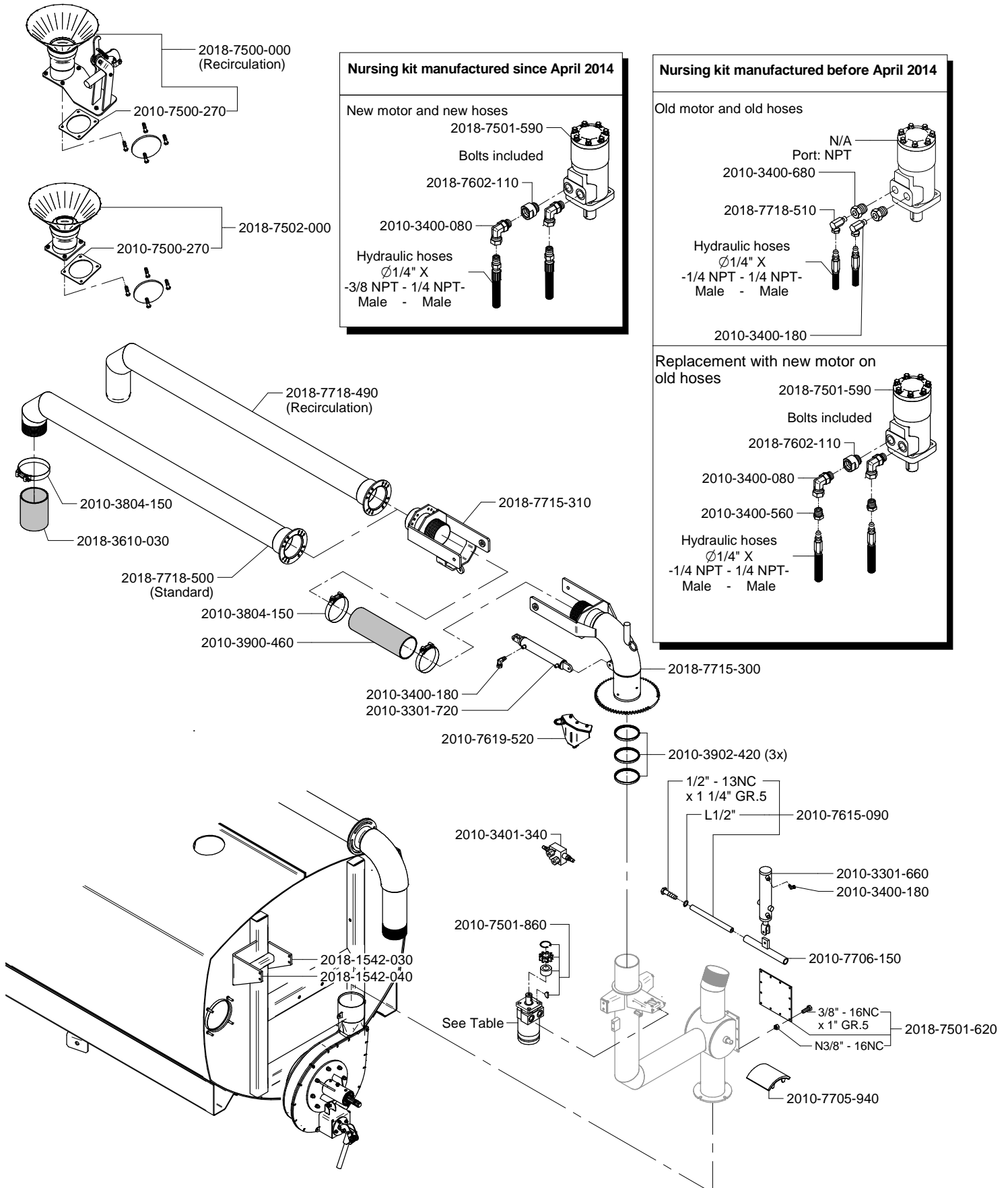
BOLTABLE HOUSING ABRASION RESISTANT STEEL



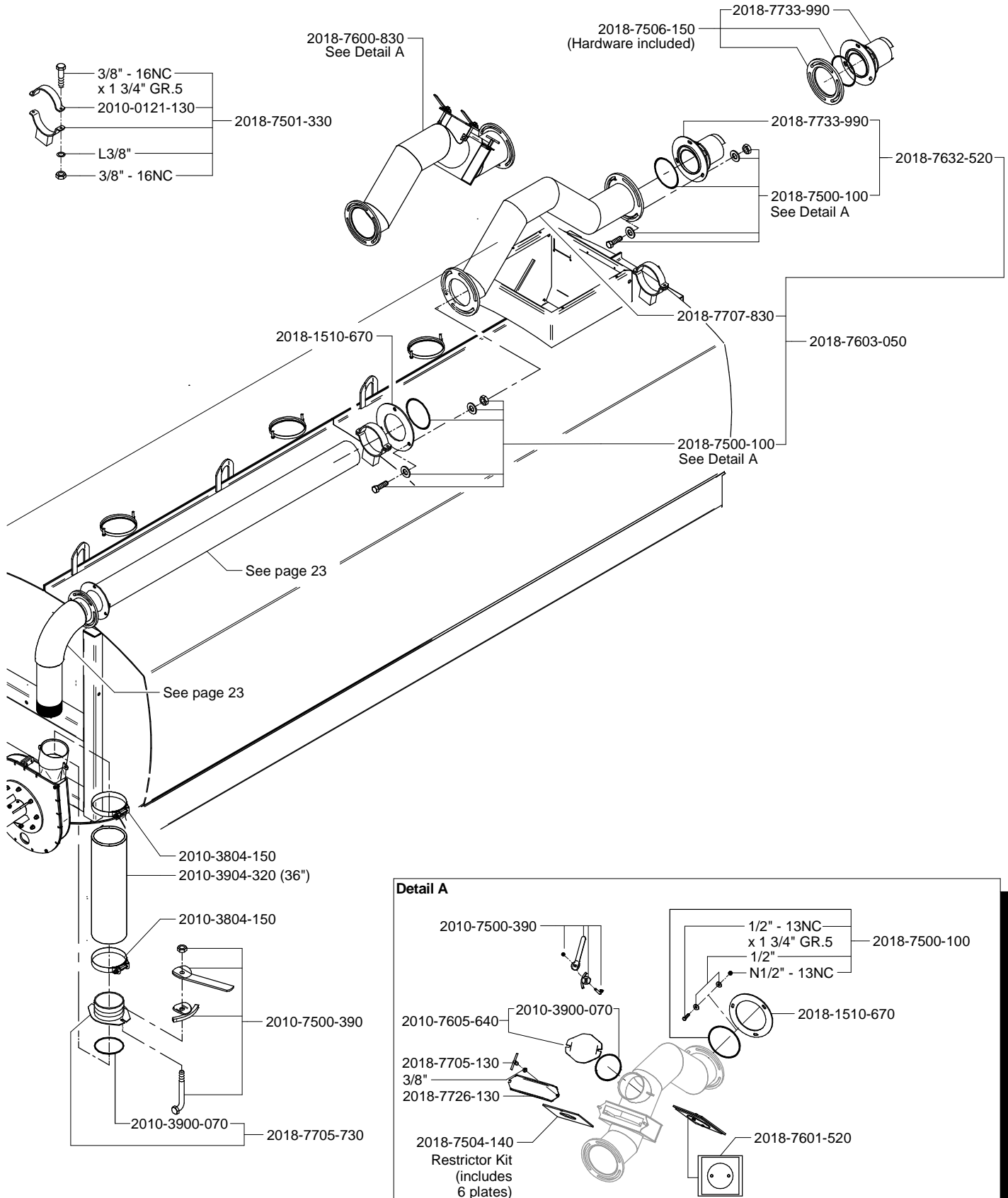




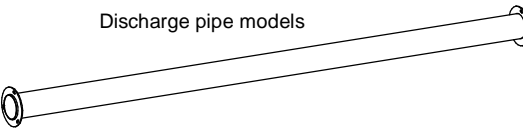


Note: For hydraulic cylinder or motor seal kit replacement, refer to Hardware & Accessories.



6" DISCHARGE PIPE



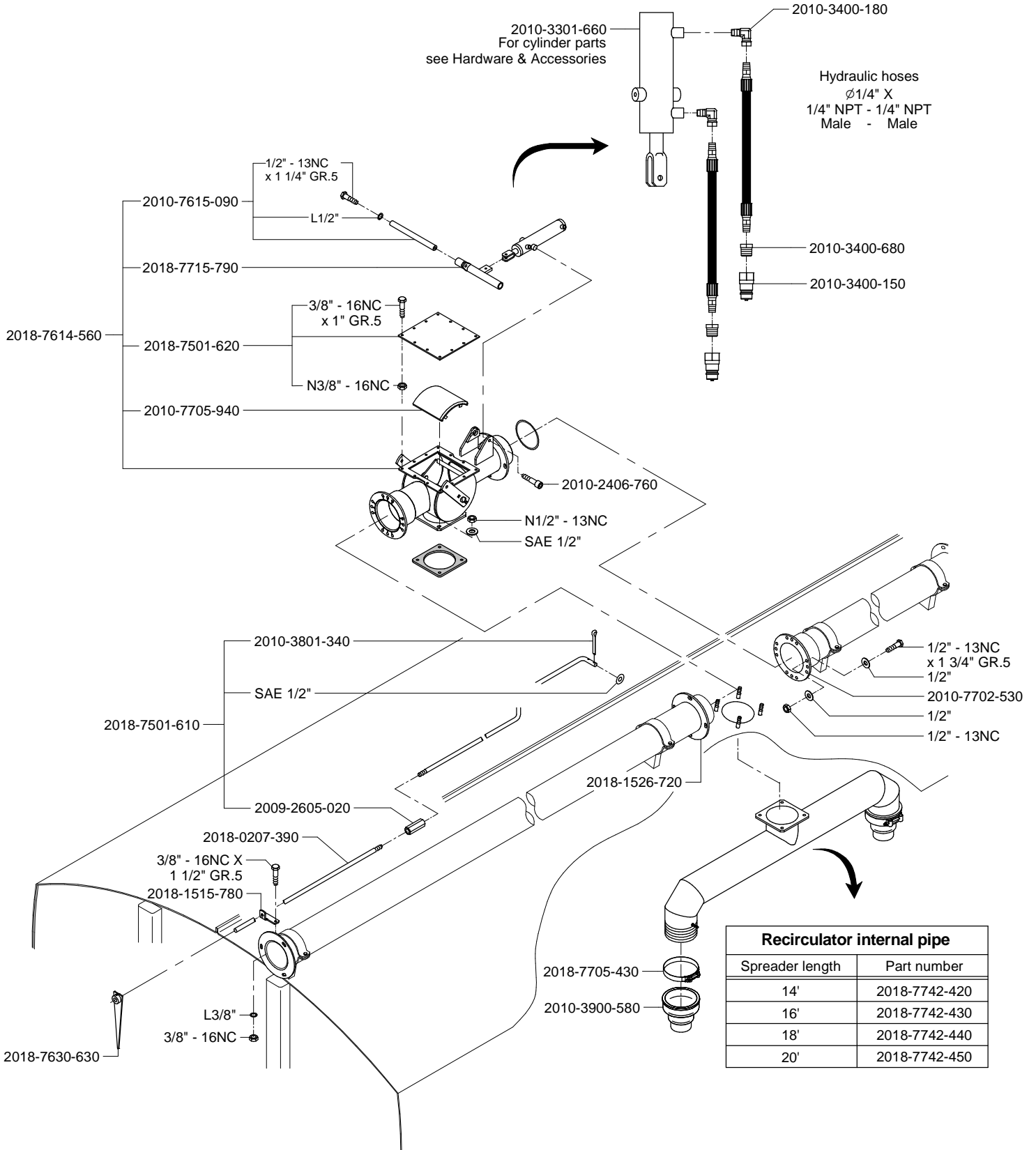
Elbow discharge pipe models				
Spreader model	Length	 6" elbow	 6" self-loading	 Discharge pipe models
EL84-2650	14'	2018-7501-910	2018-7501-940	2018-7713-670
EL84-3000	16'	2018-7501-910	2018-7501-940	2018-7713-690
EL84-3550	16'	2018-7501-910	2018-7501-940	2018-7713-690
EL84-4000	18'	2018-7501-910	2018-7501-940	2018-7713-700
EL84-4450	20'	2018-7501-910	2018-7501-940	2018-7713-710
EL84-5000	20'	2018-7501-930	2018-7501-940	2018-7713-710



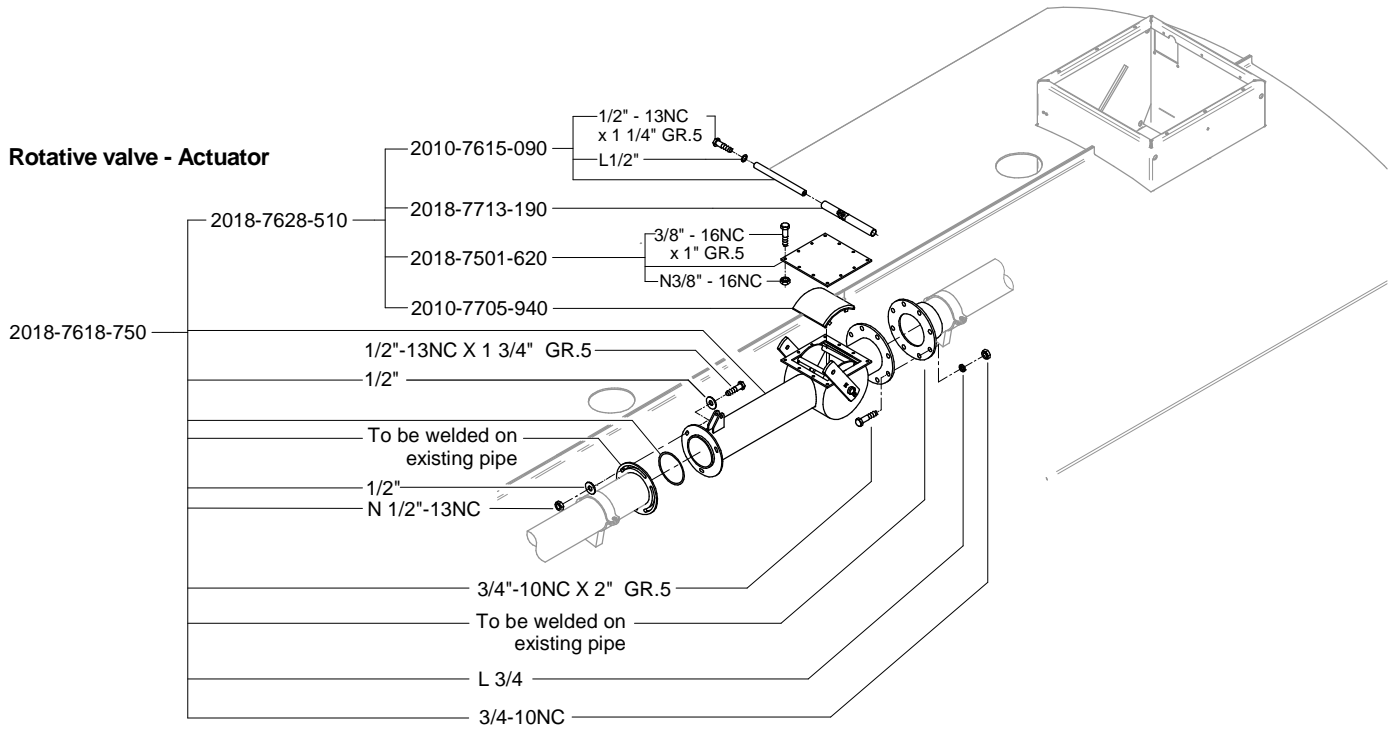
2018-1510-670
Note: flange to weld
on existing pipe.

LIQUID MANURE SPREADER - EL84

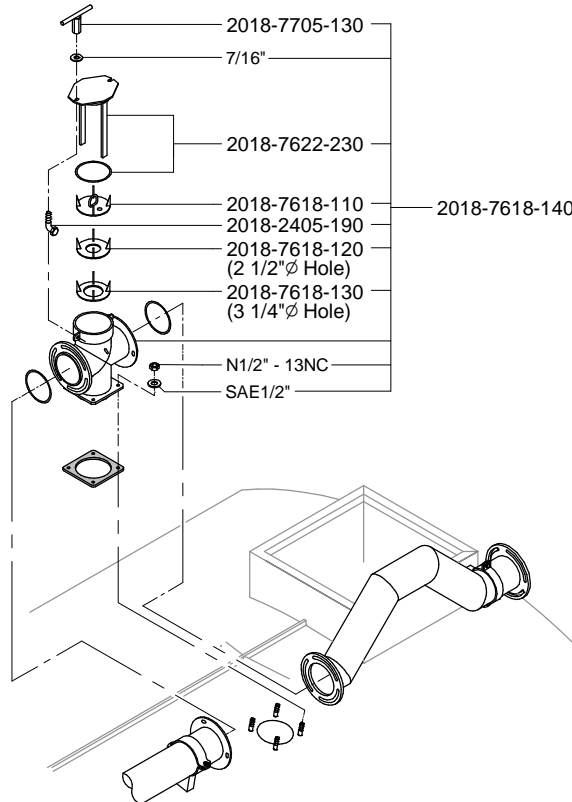
IN-TANK RECIRCULATION KIT FOR 6" DISCHARGE PIPE



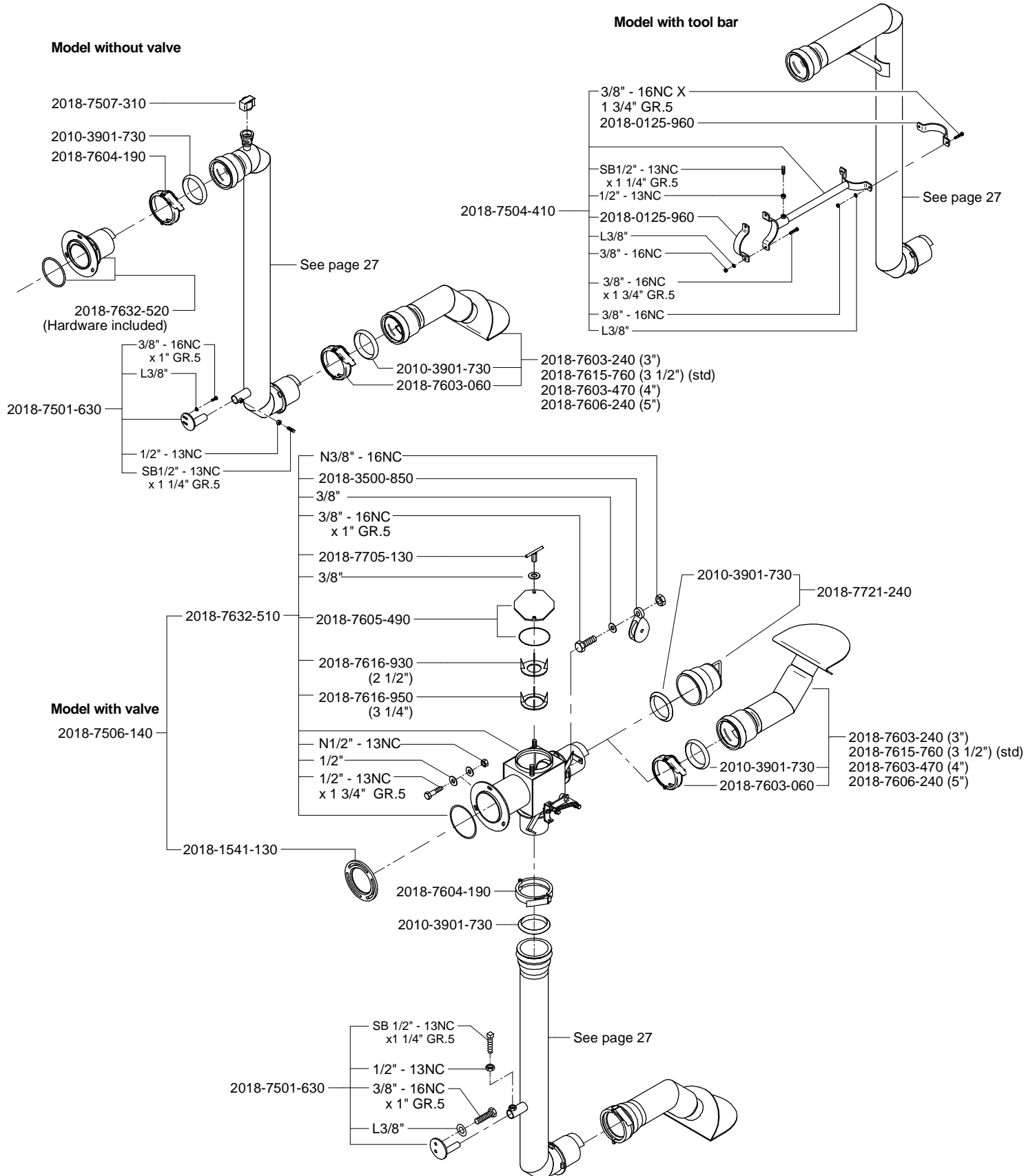
ROTATIVE VALVE FOR ACTUATOR AND CROSS-SHAPED ADAPTER WITH FLOW RESTRICTOR FOR 6" DISCHARGE PIPE

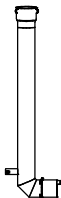
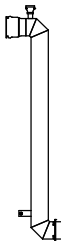
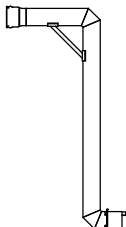
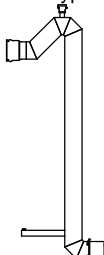


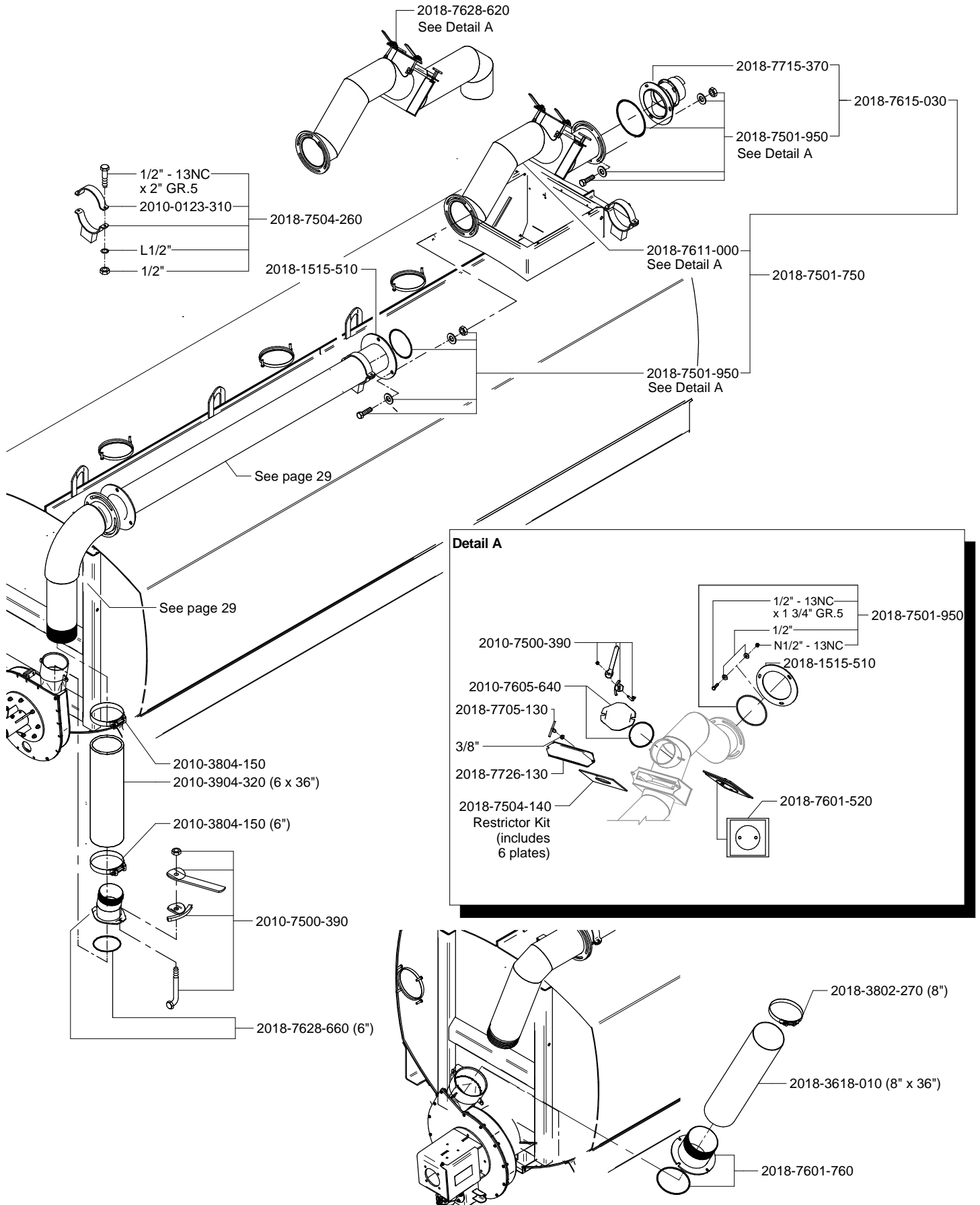
**Cross-shaped adapter
with flow restrictor**



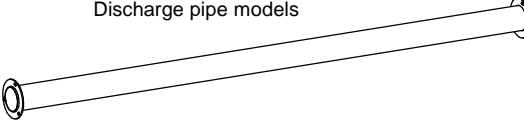


SPREADING NOZZLE AND DIRECTIONAL VALVE FOR 6" DISCHARGE PIPE



Spreader model	Gallon (UK)	Gallon (US)	Liter	With valve 	Without valve 	With tool bar 	Incorporated anti-syphon 
EL84-2650	2650	3150	11970	2018-7601-380	2018-7601-080	2018-7601-130	2018-7601-300
EL84-3000	3000	3600	13690				
EL84-3550	3350	4250	16160				
EL84-4000	4000	4800	18200	2018-7601-050	2018-7601-090	2018-7601-140	2018-7601-320
EL84-4450	4450	5350	20200				
EL84-5000	5000	6000	22750	2018-7601-060	2018-7601-110	2018-7601-170	2018-7601-390



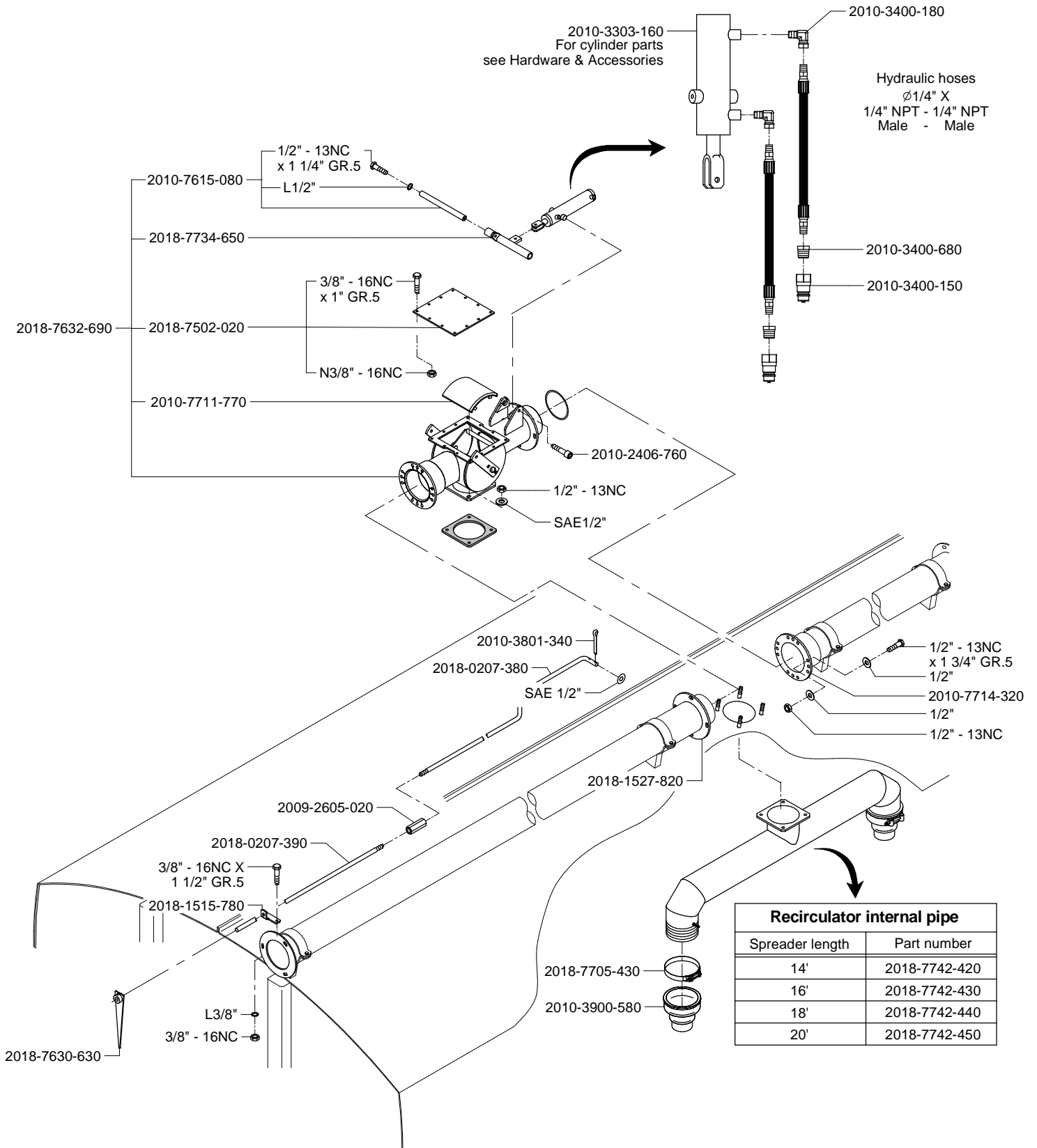
Elbow discharge pipe models				
Spreader model	Length	 8" option or 38' tow-bar	 HE impeller	 Discharge pipe models
EL84-2650	14'	na.	na.	2018-7713-390
EL84-3000	16'	na.	na.	2018-7713-400
EL84-3550	16'	2018-7501-960	na.	2018-7713-400
EL84-4000	18'	2018-7501-960	na.	2018-7713-410
EL84-4450	20'	2018-7501-960	na.	2018-7713-420
EL84-5000	20'	2018-7501-980	2018-7501-210	2018-7713-420



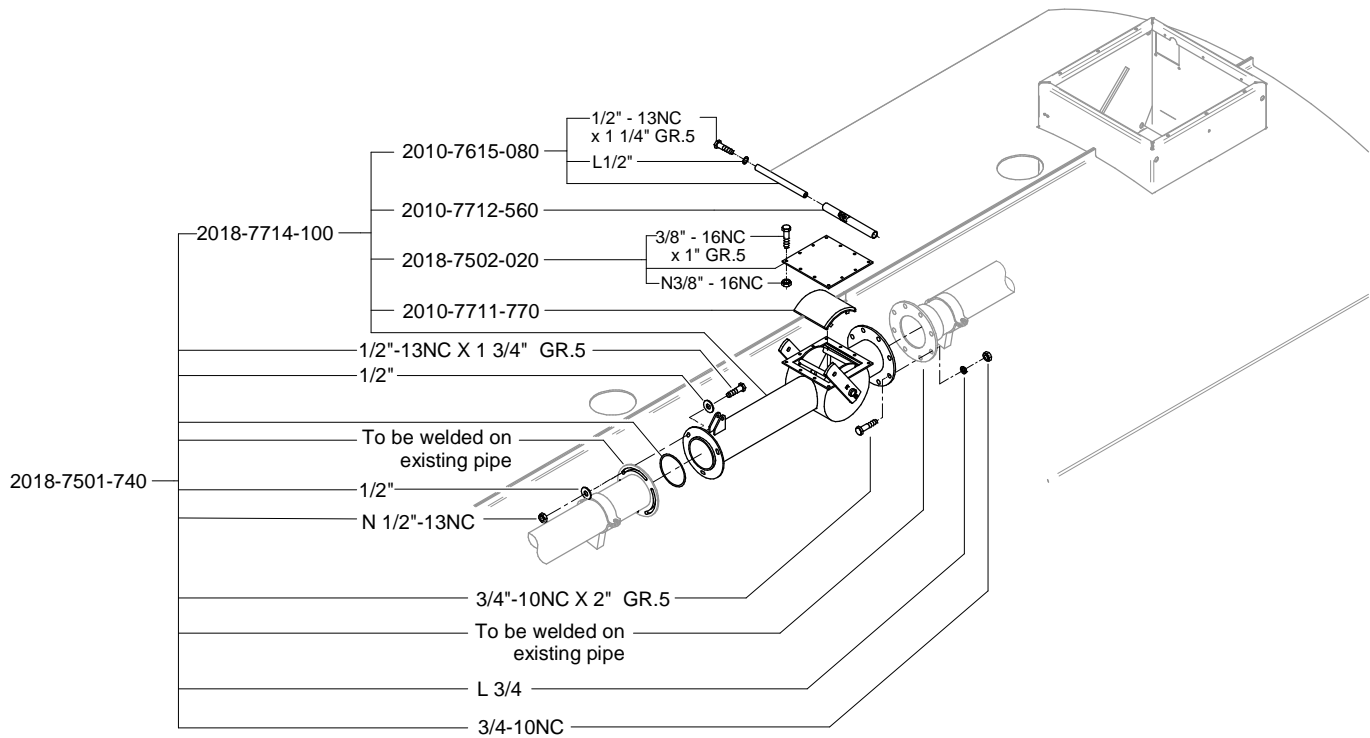
2018-1515-510
Note: flange to weld
on existing pipe.

LIQUID MANURE SPREADER - EL84

IN-TANK RECIRCULATION KIT FOR 8" DISCHARGE PIPE

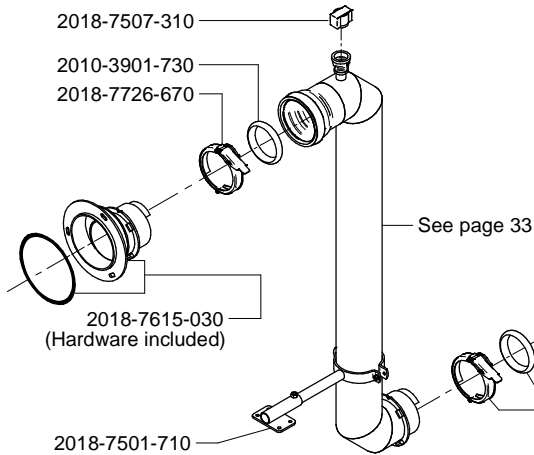


ROTATIVE VALVE FOR ACTUATOR FOR 8" DISCHARGE PIPE

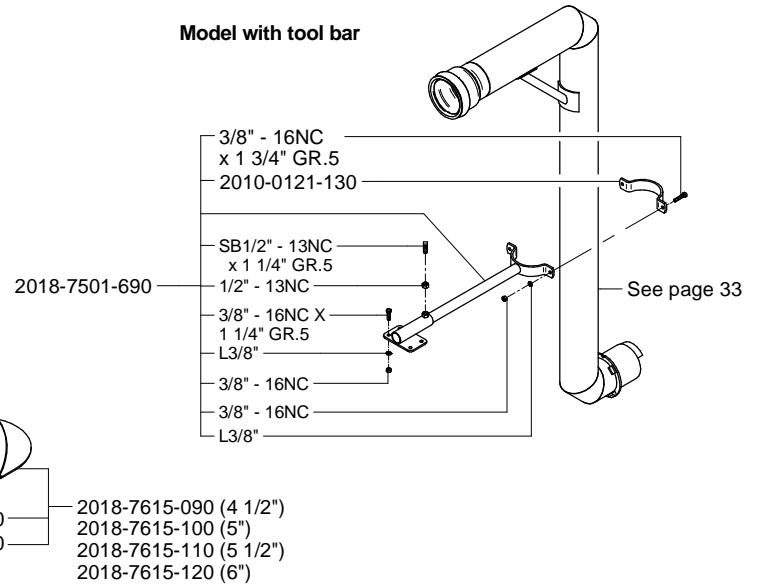


SPREADING NOZZLE AND DIRECTIONAL VALVE FOR 8" DISCHARGE PIPE

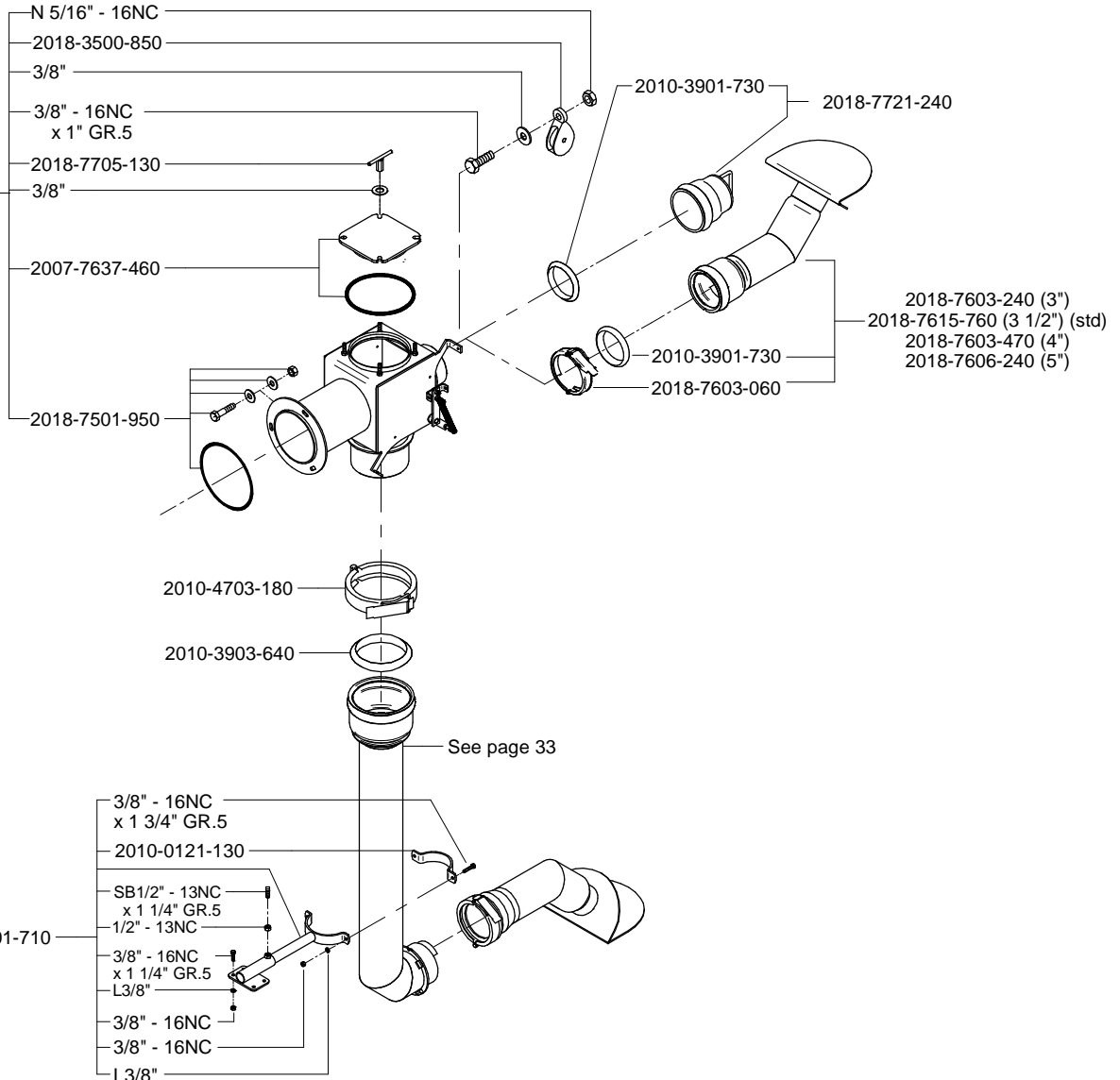
Model without valve



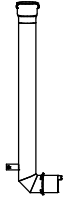
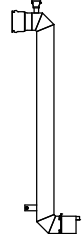
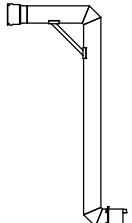
Model with tool bar

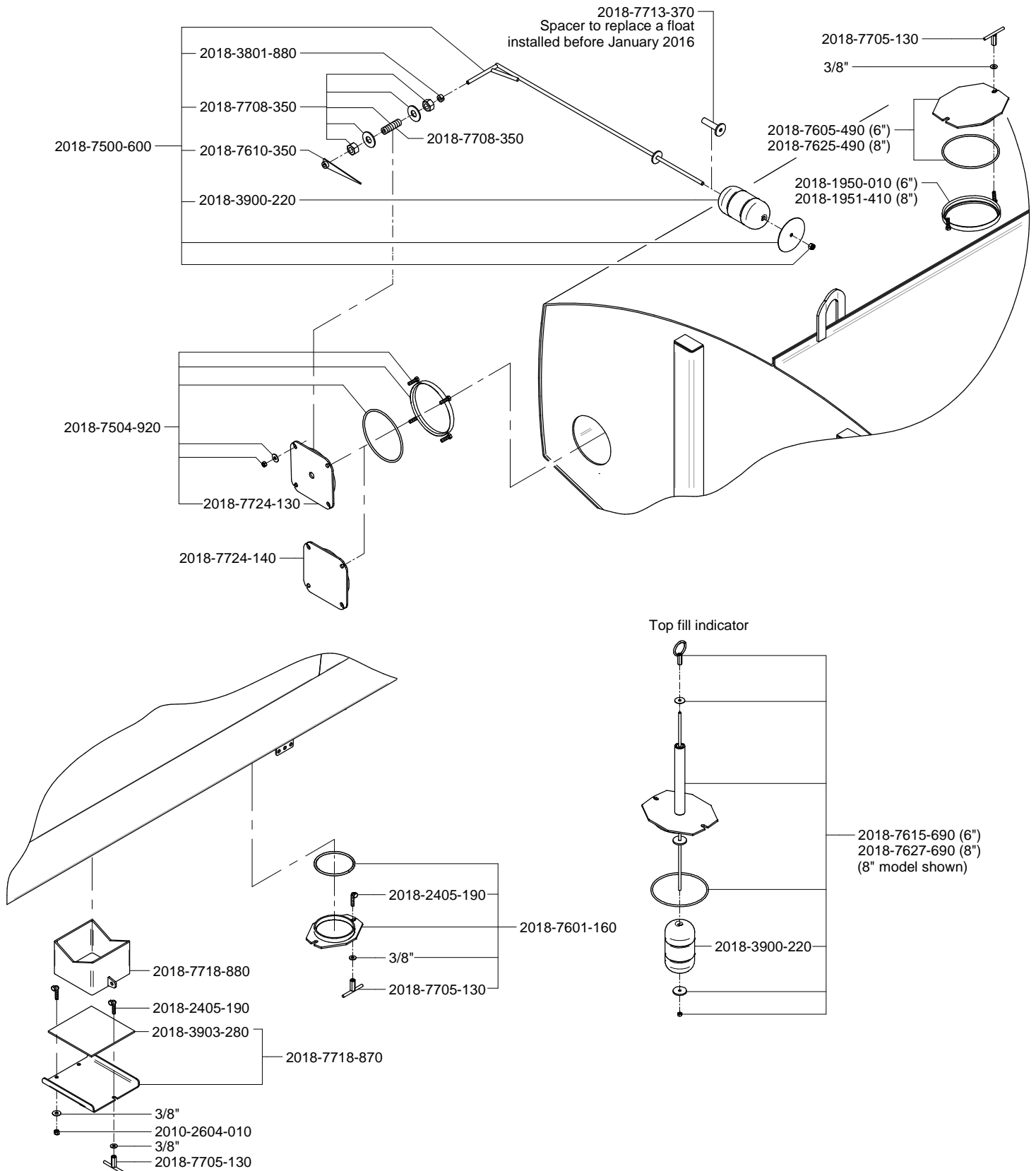


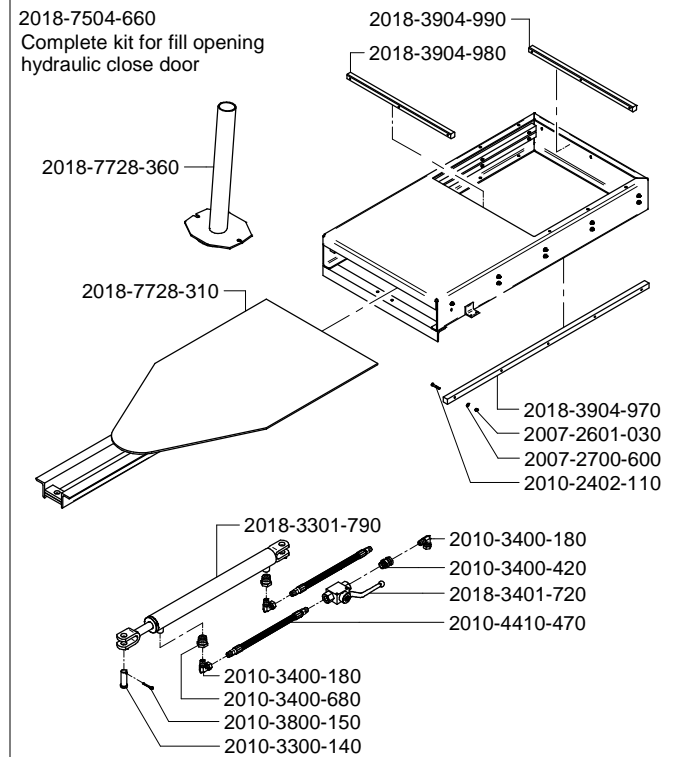
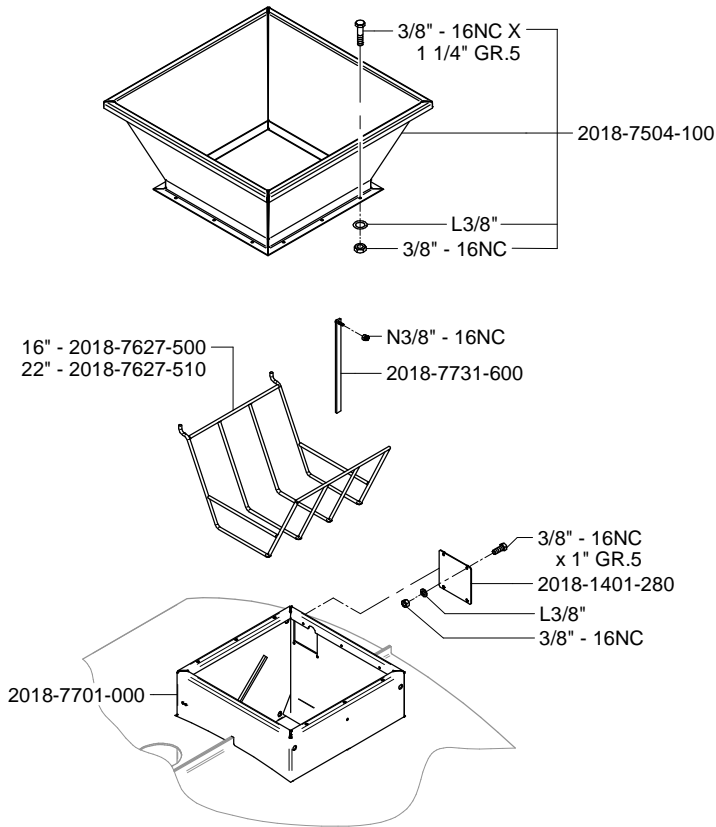
Model with valve 2018-7615-000



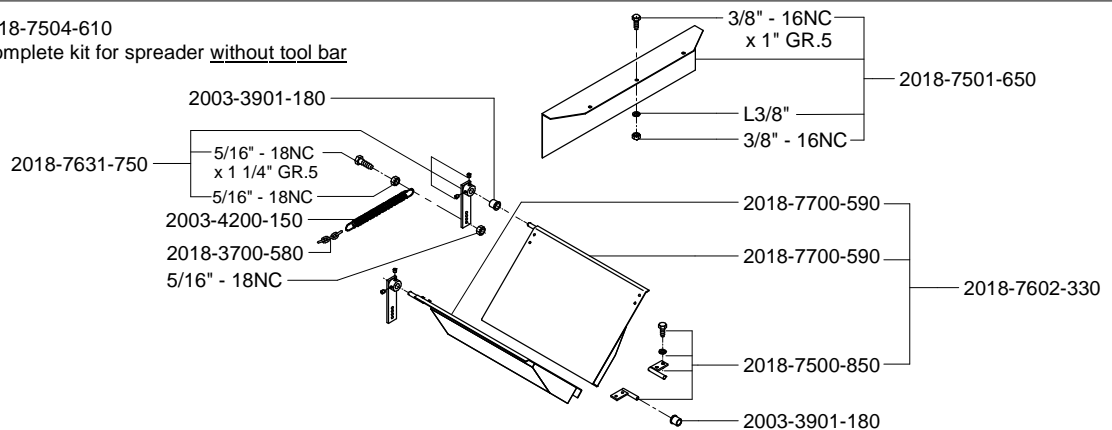
SPREADING NOZZLE PIPE CHART FOR 8" DISCHARGE PIPE

NARROW SPREADER						
Spreader model	Gallon (UK)	Gallon (US)	Liter	With valve 	Without valve 	With tool bar 
EL84-5000	5000	6000	22700	2018-7615-300	2018-7615-320	2018-7615-340

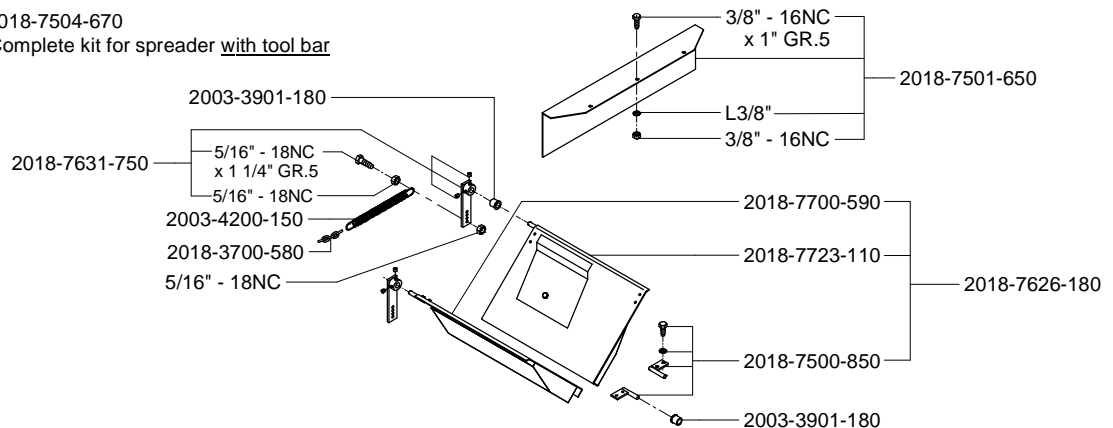


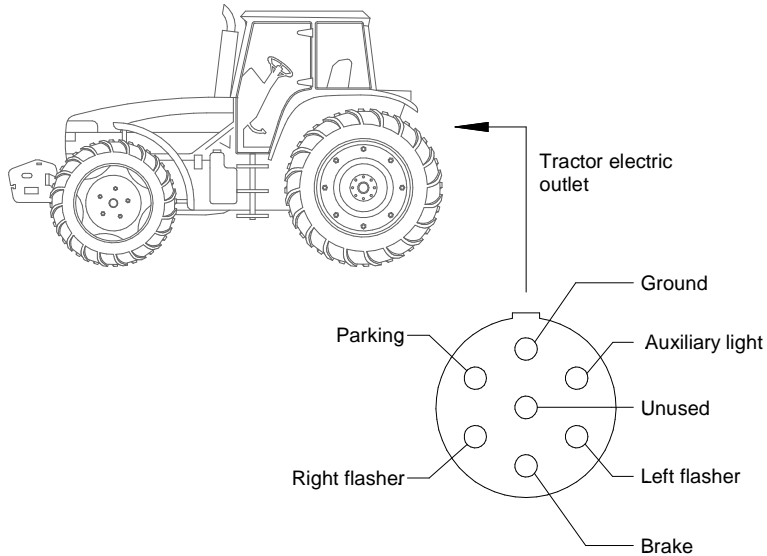
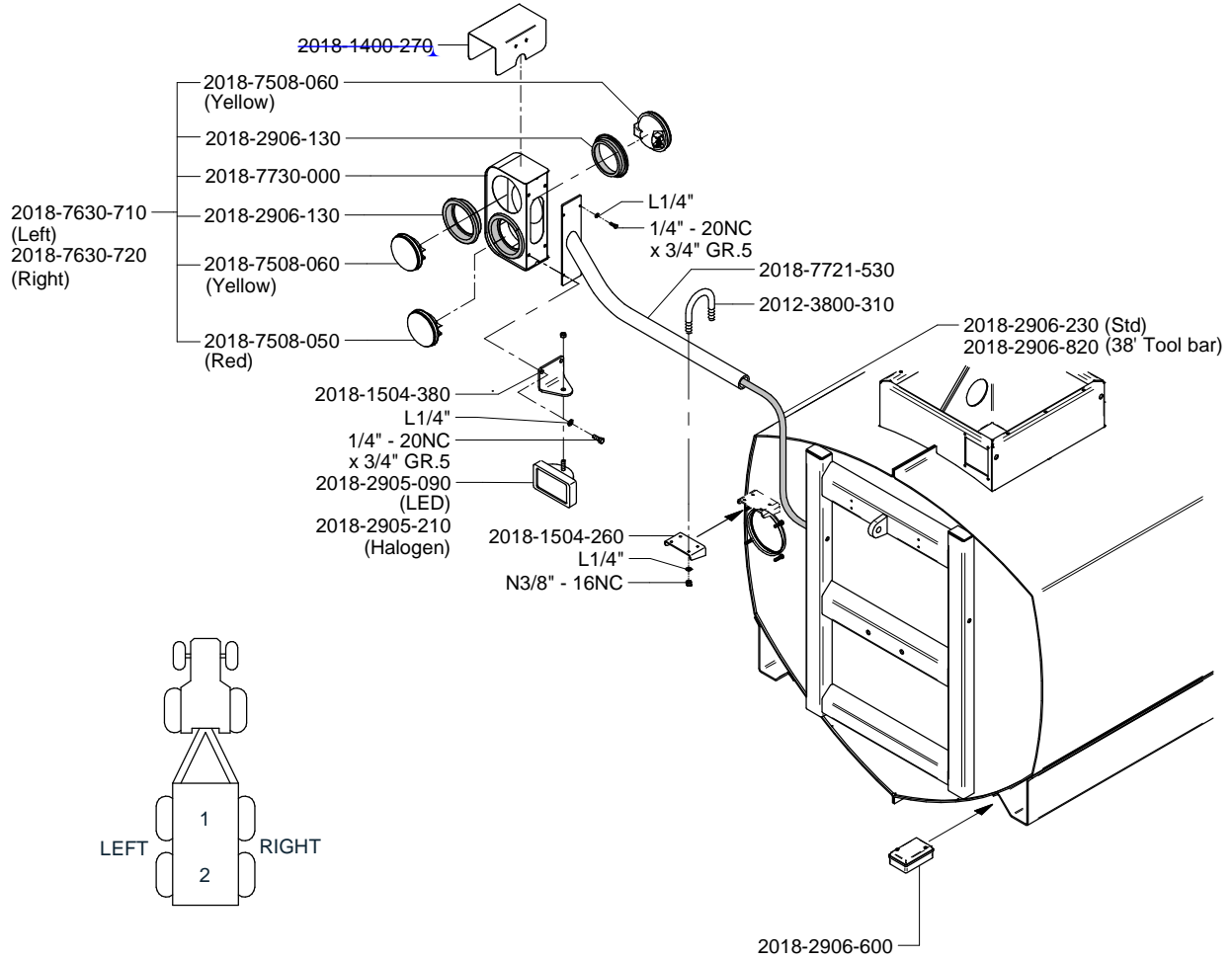


2018-7504-610
Complete kit for spreader without tool bar



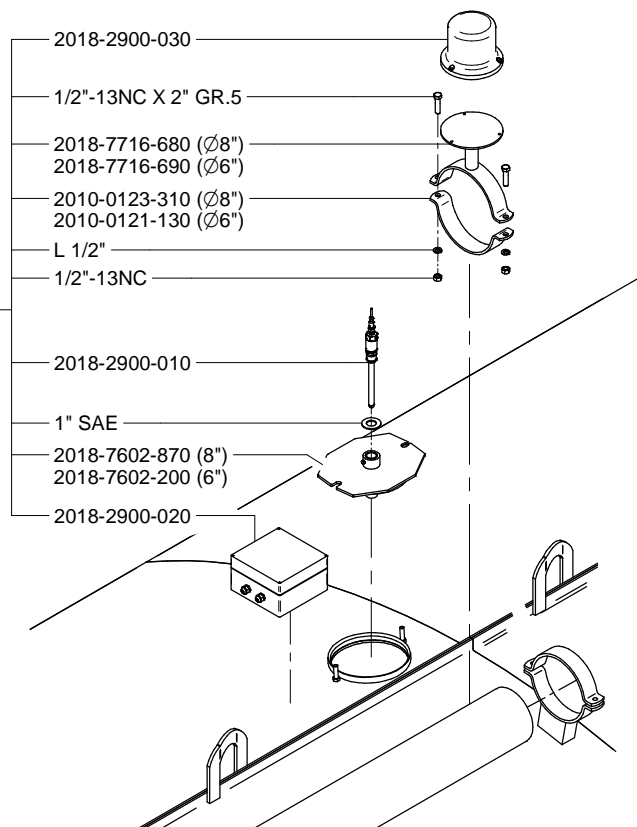
2018-7504-670
Complete kit for spreader with tool bar

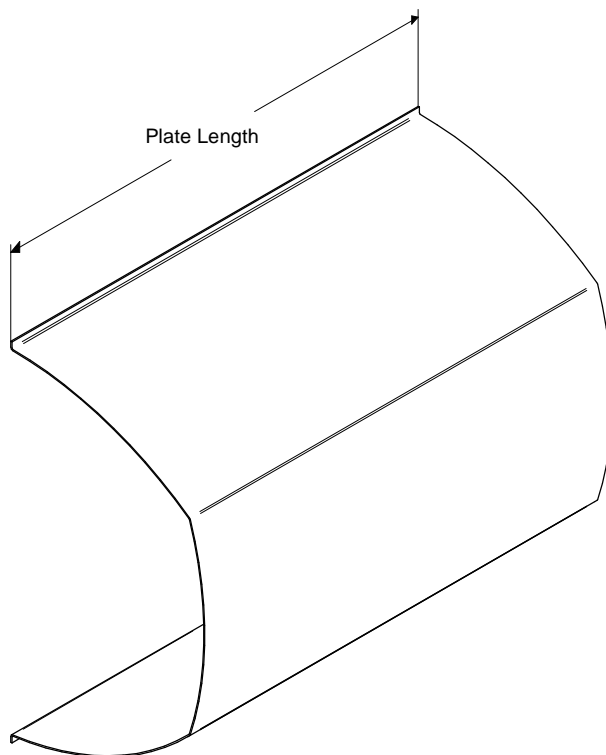




Signal light cable (plug not included)	
Spreader length	Part number
14' - 16'	2018-2906-170
18' - 20'	2018-2906-180

#	LID	PIPE
2018-7502-880	8"	8"
2018-7502-980	8"	6"
2018-7502-190	6"	8"
2018-7502-200	6"	6"





Spreader model	Capacity			Plate length	
	Gallon (UK)	Gallon (US)	Liter	steel 1/4" 6 ft	stainless steel. 5 ft
EL84-5000	5000	6000	22750	2018-1561-260	2018-2004-640

